

WAAS CH <b>69517</b> <b>W35A</b>	APP CRS <b>352°</b>	Rwy Ldg TDZE <b>250</b> Apt Elev <b>250</b>
--	------------------------	---

# RNAV (GPS) RWY 35

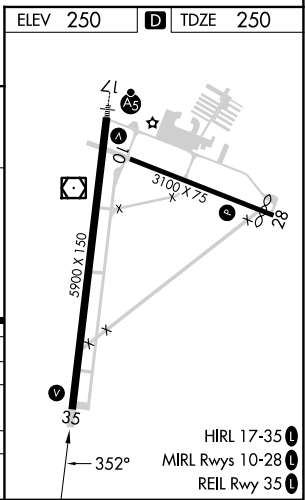
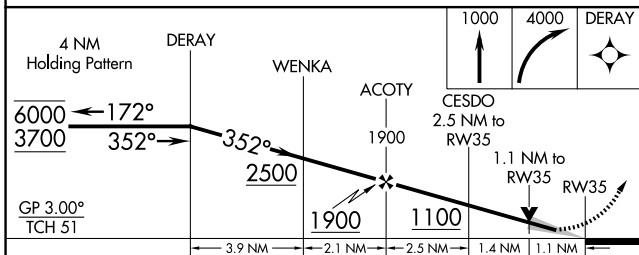
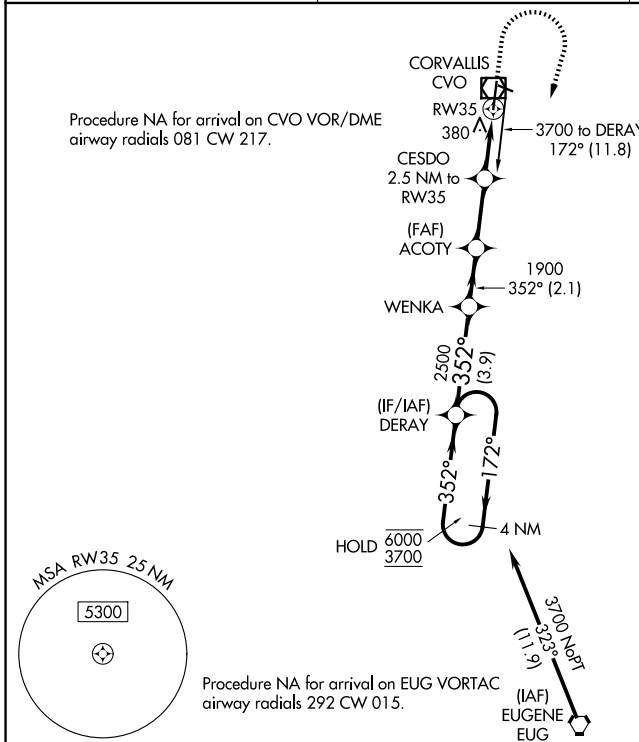
CORVALLIS MUNI (CVO)

RNP APCH - GPS.

**⚠** Circling Rwy 28 NA at night. For uncompensated Baro-VNAV systems, LNAV/VNAV NA below -1.5°C or above 54°C. When local altimeter setting not received, procedure NA.

MISSED APPROACH: Climb to 1000 then climbing right turn to 4000 direct DERAY and hold, continue climb-in-hold to 4000.

AWOS-3PT <b>135.775</b>	CASCADE APP CON * <b>127.5 348.7</b>	UNICOM <b>123.075 (CTAF) 0</b>
----------------------------	---	-----------------------------------



CATEGORY	A	B	C	D
LPV DA		500-3/4	250 (300-3/4)	
LNAV/VNAV DA		551-7/8	301 (400-7/8)	
LNAV MDA	640-1	390 (400-1)	640-1 1/8	390 (400-1 1/8)
CIRCLING	720-1 470 (500-1)	740-1 490 (500-1)	920-1 3/4 670 (700-1 3/4)	1080-2 3/4 830 (900-2 3/4)

NW-1, 16 APR 2026 to 14 MAY 2026

NW-1, 16 APR 2026 to 14 MAY 2026