

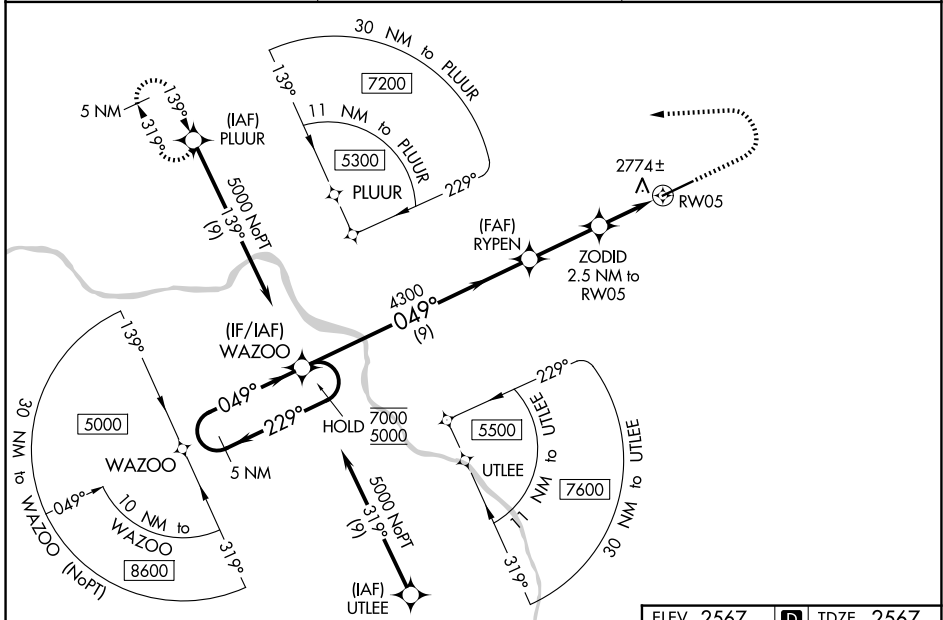
WAAS CH 40243 W05B	APP CRS 049°	Rwy Ldg TDZE Apt Elev	7100 2567 2567
---------------------------------	------------------------	-----------------------------	---

RNAV (GPS) RWY 5

PULLMAN/MOSCOW RGNL (PUW)

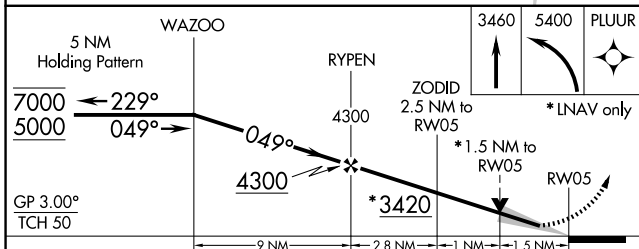
RNP APCH.	MALSR 	MISSED APPROACH: Climb to 3460 then climbing left turn to 5400 direct PLUUR and hold. # Missed approach requires minimum climb of 250 feet per NM to 4800.
<p>▼ For uncompensated Baro-VNAV systems, LNAV/VNAV NA below -20° C or above 54° C. For inop ALS, increase LPV all Cats visibility to RVR 4500 and LNAV Cat C/D visibility to 1 3/8 SM. ▲ RVR 1800 authorized with use of FD or AP or HUD to DA.</p>		

ASOS 135.675	SEATTLE CENTER 123.95 290.55	UNICOM 122.8 (CTAF) 0
------------------------	--	---------------------------------



NW-1, 16 APR 2026 to 14 MAY 2026

NW-1, 16 APR 2026 to 14 MAY 2026



ELEV 2567	D TDZE 2567
-----------	--------------------

CATEGORY	A	B	C	D
LPV DA#†		2767/24	200 (200-1/2)	
LPV DA		2846/24	279 (300-1/2)	
LNAV/VNAV DA		3005/40	438 (500-3/4)	
LNAV MDA	3080/24	513 (600-1/2)	3080/55	513 (600-1)
CIRCLING	3080-1 513 (600-1)	3120-1 553 (600-1)	3140-1 1/2 573 (600-1 1/2)	3420-2 3/4 853 (900-2 3/4)

