

APP CRS	Rwy Ldg	7100
239°	TDZE	2552
	Apt Elev	2567

RNAV (GPS) Y RWY 23

PULLMAN/MOSCOW RGNL (PUW)

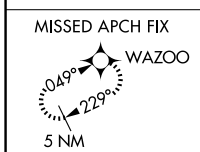
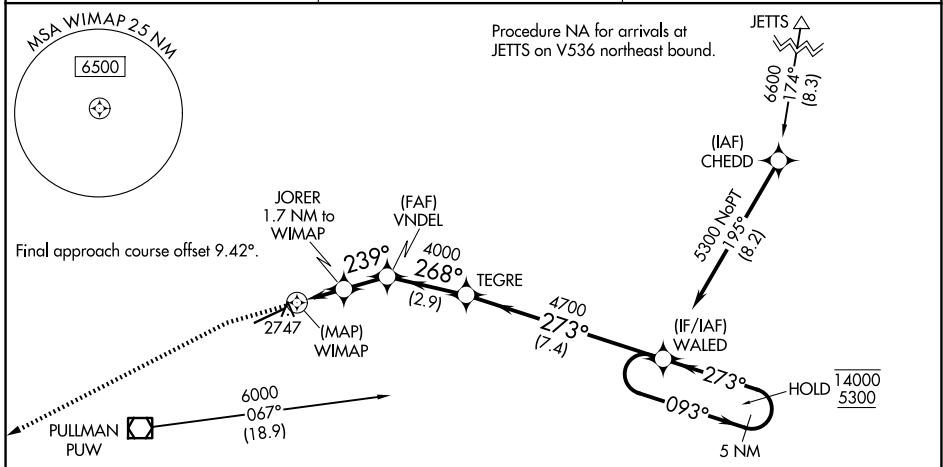
RNP APCH-GPS.

▼ Rwy 23 helicopter visibility reduction below 1 SM NA. Straight-in

▲ Rwy 23 at night, operational VGSI required, remain on or above VGSI glidepath until threshold.

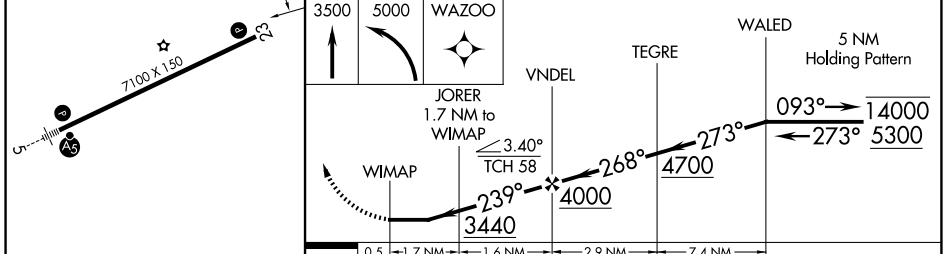
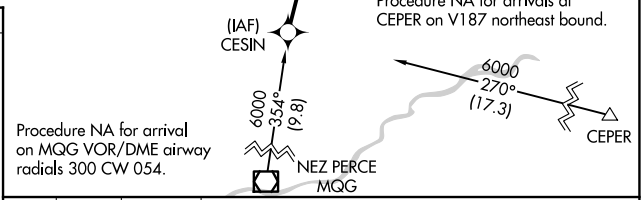
MISSED APPROACH: Climb to 3500 then climbing left turn to 5000 direct WAZOO and hold.

ASOS 135.675	SEATTLE CENTER 123.95 290.55	UNICOM 122.8 (CTAF) 0
------------------------	--	---------------------------------



Procedure NA for arrival on PUW VOR/DME airway radials 033 CW 120.

ELEV 2567	D	TDZE 2552
-----------	----------	-----------



CATEGORY	A	B	C	D
LNAV MDA	3000-1	448 (500-1)	3000-1½	448 (500-1½)

NW-1, 16 APR 2026 to 14 MAY 2026

NW-1, 16 APR 2026 to 14 MAY 2026