

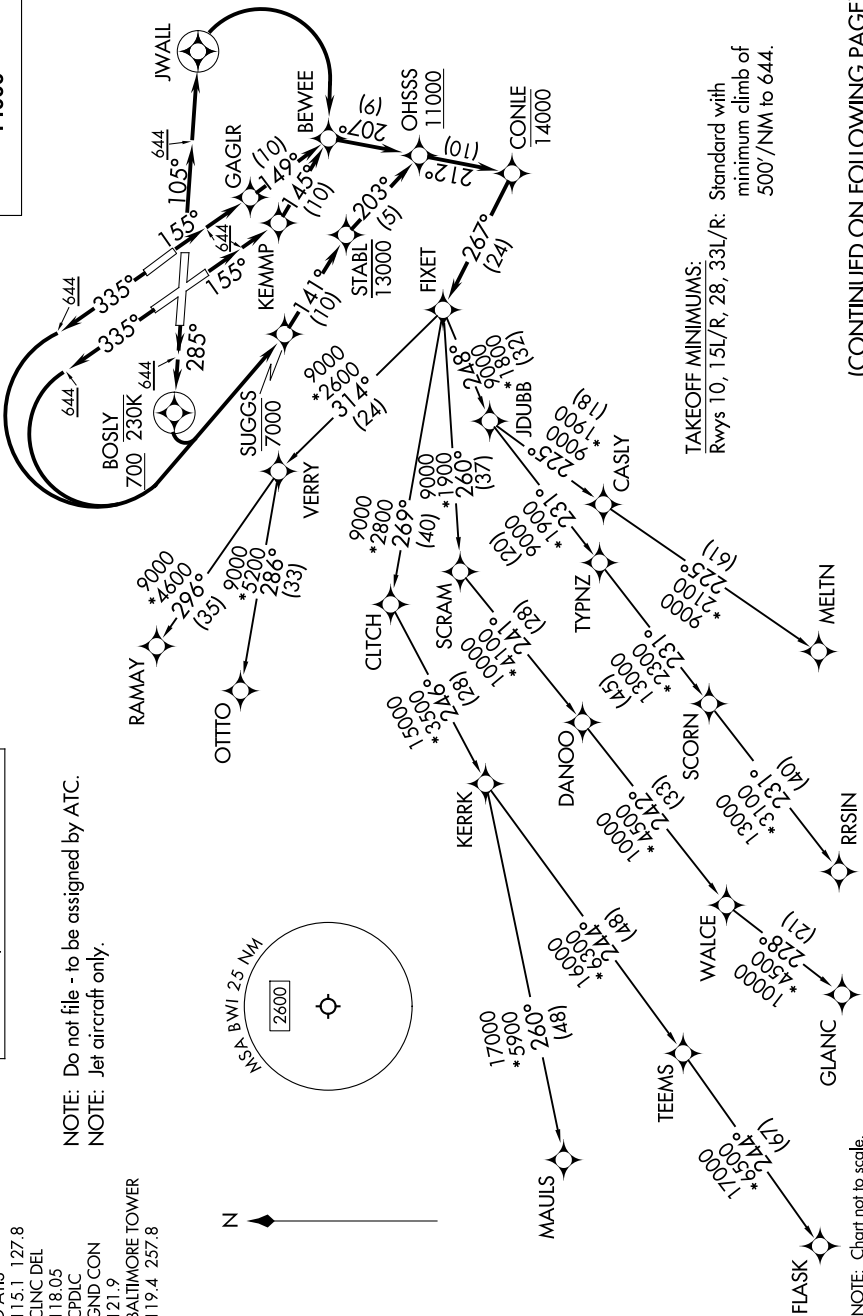
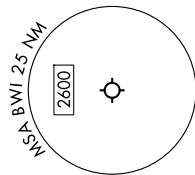
FIXET FIVE DEPARTURE (RNAV)

**TOP ALTITUDE:
14000**

RNAV 1-DME/DME/IRU or GPS.
RADAR required.

POTOMAC DEP CON
124.55 317.425
D-ATIS
115.1 127.8
CLNC DEL
118.05
CPDIC
GND CON
121.9
BALTIMORE TOWER
119.4 257.8

NOTE: Do not file - to be assigned by ATC.
NOTE: Jet aircraft only.



TAKEOFF MINIMUMS:
Rwys 10, 15L/R, 28, 33L/R: Standard with minimum climb of 500'/NM to 644.

NOTE: Chart not to scale.

(CONTINUED ON FOLLOWING PAGE)