

LOC I-RUX 111.7	APP CRS 335°	Rwy Ldg TDZE Apt Elev	8301 143 143
---------------------------	------------------------	-----------------------------	---

ILS RWY 33L (SA CAT I & II)

BALTIMORE/WASHINGTON INTL THURGOOD MARSHALL (BWI)

RNP APCH - GPS. From KOOLZ.
RADAR required for procedure entry. DME or RADAR required.

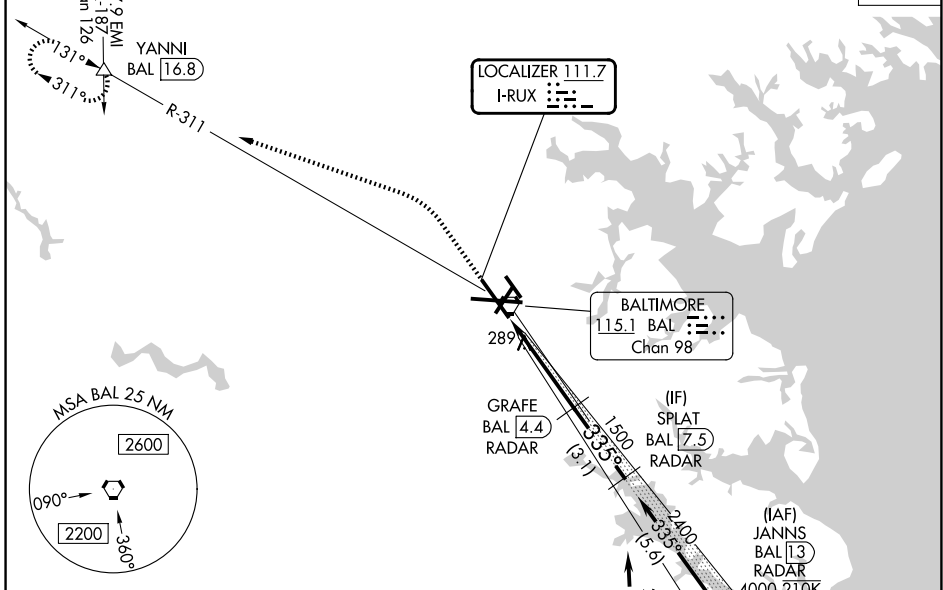
Simultaneous approach authorized with ILS or LOC Rwy 33R. DME from BAL VORTAC. DME use requires simultaneous reception of I-RUX and BAL DME. SA Cat I & II: Requires specific OPSPEC, MSPEC, or LOA approval.



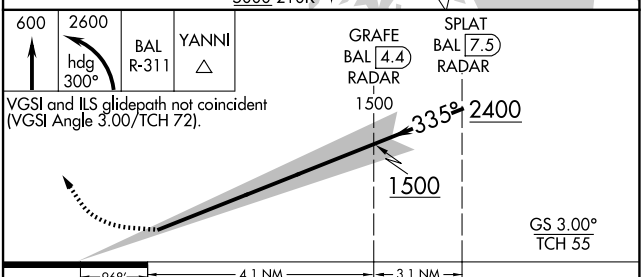
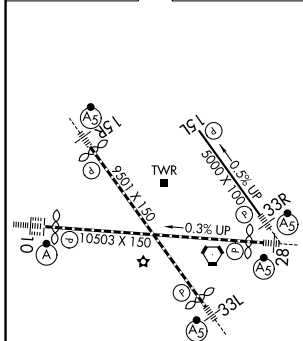
MISSED APPROACH: Climb to 600 then climbing left turn to 2600 on heading 300° and BAL VORTAC R-311 to YANNI INT/ BAL 16.8 DME and hold.

D-ATIS 115.1 127.8	POTOMAC APP CON 119.0 282.275 (020°-100°)	119.7 290.475 (131°-180°)	BALTIMORE TOWER 119.4 257.8	GND CON 121.9	CLNC DEL 118.05
------------------------------	--	-------------------------------------	--	--------------------------------	----------------------------------

124.55 317.425 (101°-130°)	128.7 307.9 (181°-019°)				CPDLC
--------------------------------------	-----------------------------------	--	--	--	-------



ELEV 143	D	TDZE 143
----------	----------	----------



CATEGORY	A	B	C	D
S-ILS 33L	SA CAT I RA 185/14 150 DA 293			
S-ILS 33L	SA CAT II RA 128/12 100 DA 243			

SA CATEGORY I & II ILS - SPECIAL AIRCREW & AIRCRAFT CERTIFICATION REQUIRED

TDZ/CL Rws 10 and 33L
REIL Rws 15L and 33R
HIRL all Rws

NE-3, 16 APR 2026 to 14 MAY 2026

NE-3, 16 APR 2026 to 14 MAY 2026