

LOC I-BAL <b>109.7</b>	APP CRS <b>105°</b>	Rwy Ldg <b>9953</b> TDZE <b>143</b> Apt Elev <b>143</b>
---------------------------	------------------------	---

BALTIMORE/  
WASHINGTON INTL THURGOOD MARSHALL (BWI)  
**ILS or LOC RWY 10**

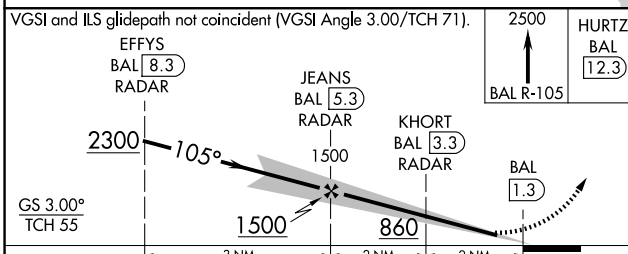
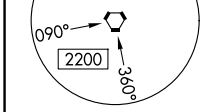
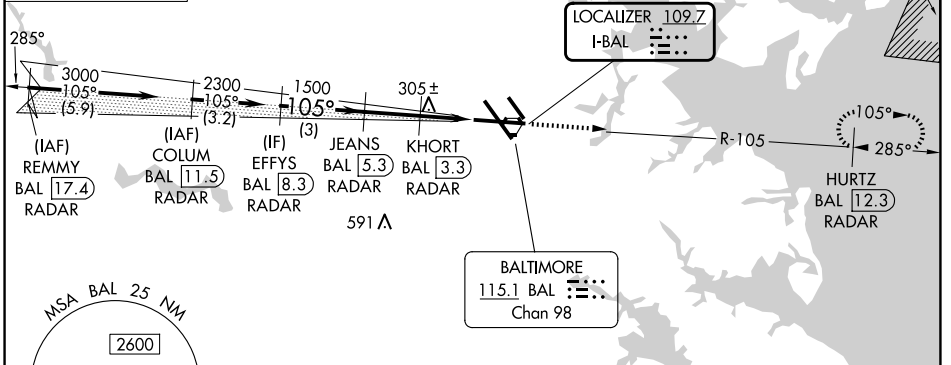
RADAR required for procedure entry.  
DME or RADAR required.



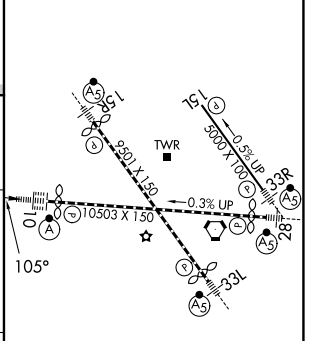
MISSED APPROACH: Climb to 2500 on BAL VORTAC R-105 to HURTZ/BAL 12.3 DME/RADAR and hold.

D-ATIS <b>115.1 127.8</b>	POTOMAC APP CON <b>119.0 282.275</b> (020°-100°) <b>119.7 290.475</b> (131°-180°) <b>124.55 317.425</b> (101°-130°) <b>128.7 307.9</b> (181°-019°)	BALTIMORE TOWER <b>119.4 257.8</b>	GND CON <b>121.9</b>	CLNC DEL <b>118.05</b>
------------------------------	--	---------------------------------------	-------------------------	---------------------------

ALTERNATE MISSED APCH FIX  
WESTMINSTER  
EMI ---  
117.9  
Chan 126



ELEV 143	<b>D</b>	TDZE 143
----------	----------	----------



CATEGORY	A	B	C	D
S-ILS 10		343/18	200 (200-½)	
S-LOC 10	580/24	437 (500-½)	580/40	437 (500-¾)
CIRCLING	640-1 497 (500-1)	660-1 517 (600-1)	700-1½ 557 (600-1½)	880-2¼ 737 (800-2¼)

FAF to MAP 4.1 NM					
Knots	60	90	120	150	180
Min:Sec	4:06	2:44	2:03	1:38	1:22

**ILS or LOC RWY 10**

NE-3, 16 APR 2026 to 14 MAY 2026

NE-3, 16 APR 2026 to 14 MAY 2026