

RAVNN EIGHT ARRIVAL (RNAV) Transition Routes

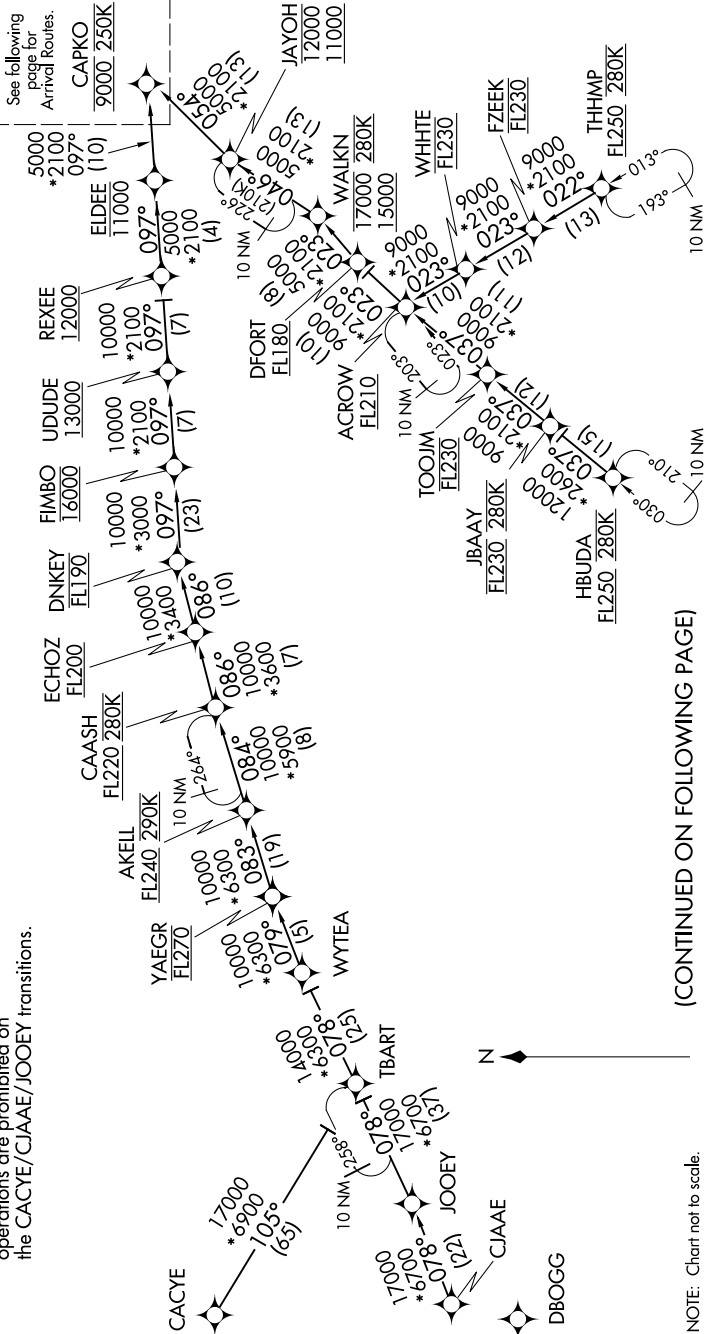
BALTIMORE, MARYLAND

NE-3, 16 APR 2026 to 14 MAY 2026

RNAV 1 - DME/DME/IRU or GPS.  
RADAR required.

POTOMAC APP CON  
128.35 270.275  
BWI D-ATIS  
115.1 127.8  
MTN ATIS 124.925

NOTE: Jet aircraft only.  
NOTE: All part 91, 101, 103, 105, 125,  
133, 135, and 137 flight  
operations are prohibited on  
the CACYE/CJAAE/JOOEY transitions.



RAVNN EIGHT ARRIVAL (RNAV) Transition Routes  
(CAPKO.RAVNN8) 17APR25

BALTIMORE, MARYLAND

(CONTINUED ON FOLLOWING PAGE)

NOTE: Chart not to scale.

NE-3, 16 APR 2026 to 14 MAY 2026