

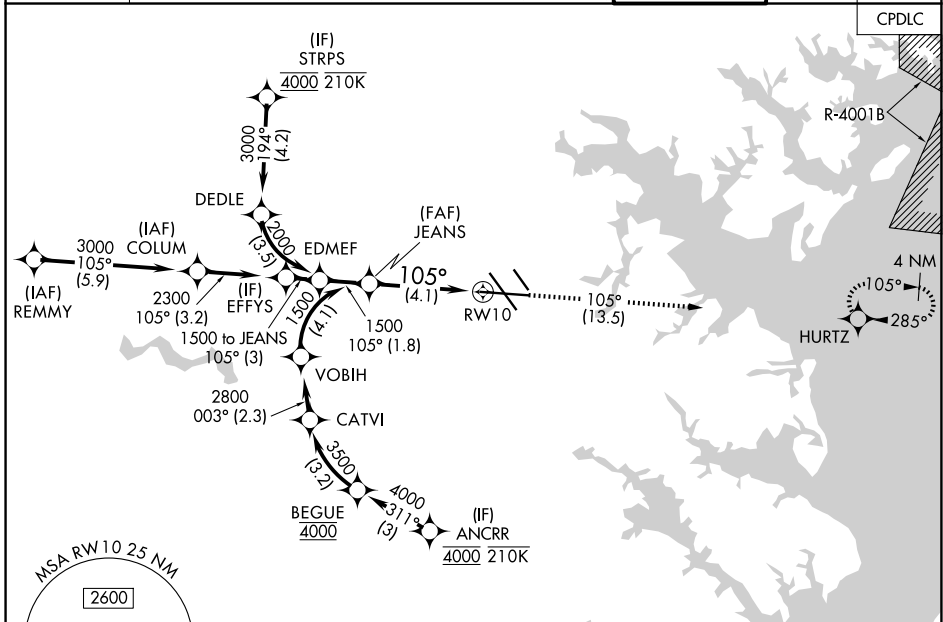
APP CRS 105°	Rwy Ldg TDZE Apt Elev	9953 143 143
------------------------	-----------------------------	---

RNAV (RNP) Z RWY 10

BALTIMORE/WASHINGTON INTL THURGOOD MARSHALL (BWI)

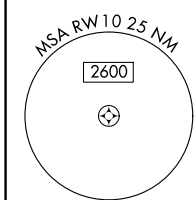
RNP AR APCH - GPS.	ALSF-2	MISSED APPROACH: Climb to 2500 on track 105° to HURTZ and hold.
▼ For uncompensated Baro-VNAV systems, procedure NA below -11°C or above 54°C. For inop ALS, increase RNP 0.11 all Cats visibility to RVR 4500, increase RNP 0.30 all Cats visibility to 1 3/8 SM.		

D-ATIS 115.1 127.8	POTOMAC APP CON 119.0 282.275 124.55 317.425	(020°-100°) 119.7 290.475 (131°-180°) (101°-130°) 126.7 307.9 (181°-019°)	BALTIMORE TOWER 119.4 257.8	GND CON 121.9	CLNC DEL 118.05
------------------------------	--	--	---------------------------------------	-------------------------	---------------------------

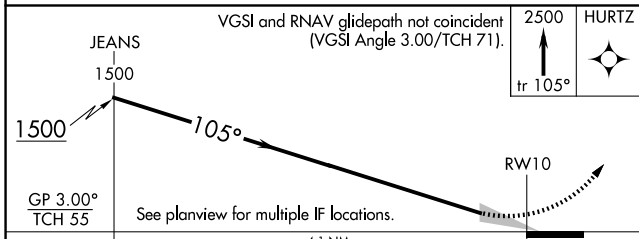


NE-3, 16 APR 2026 to 14 MAY 2026

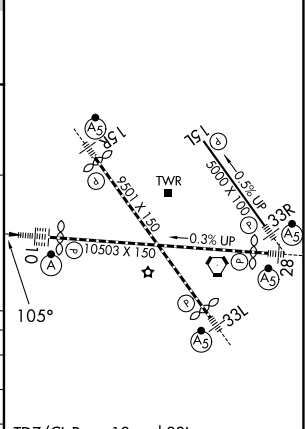
NE-3, 16 APR 2026 to 14 MAY 2026



ELEV 143	D	TDZE 143
----------	----------	----------



	4.1 NM			
CATEGORY	A	B	C	D
RNP 0.11 DA		444/24	301 (400-1/2)	
RNP 0.30 DA		628/50	485 (500-1)	



TDZ/CL Rwys 10 and 33L
REIL Rwys 15L and 33R
HIRL all Rwys

AUTHORIZATION REQUIRED

RNAV (RNP) Z RWY 10