

RNAV (RNP) Z RWY 15R

BALTIMORE/WASHINGTON INTL THURGOOD MARSHALL (BWI)

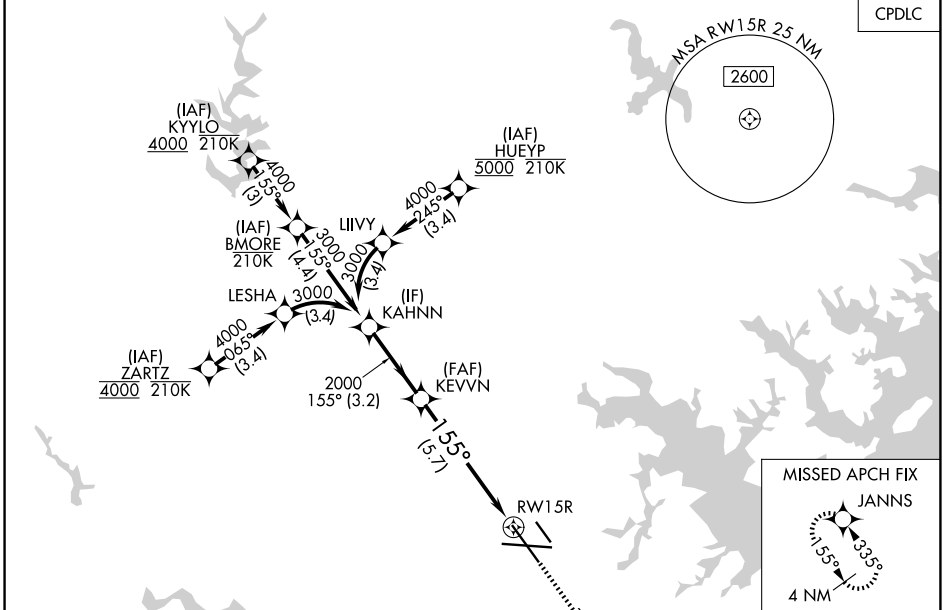
APP CRS 155°	Rwy Ldg TDZE Apt Elev	8301 138 143
------------------------	-----------------------------	---

RNP AR APCH - GPS.

▼ For uncompensated Baro-VNAV systems, procedure NA below -11°C or above 54°C.
 Simultaneous approach authorized with Rwy 15L.
 For inop ALS, increase RNP 0.11 DA all Cats visibility to RVR 5500.

MALSR 	MISSED APPROACH: Climb to 2500 on track 155° to JANNIS and hold.
-----------	--

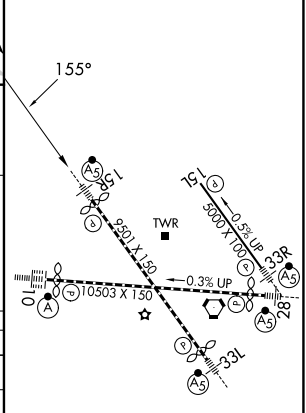
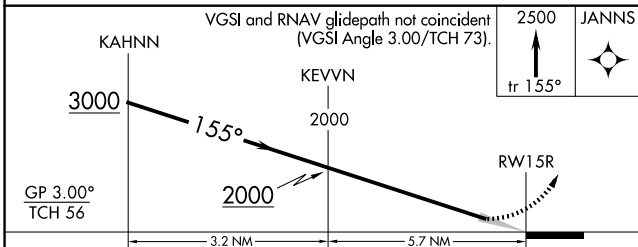
D-ATIS 115.1 127.8	POTOMAC APP CON (020°-100°) 119.7 290.475 (131°-180°) (101°-130°) 128.7 307.9 (181°-019°)	BALTIMORE TOWER 119.4 257.8	GND CON 121.9	CLNC DEL 118.05
------------------------------	---	---------------------------------------	-------------------------	---------------------------



NE-3, 16 APR 2026 to 14 MAY 2026

NE-3, 16 APR 2026 to 14 MAY 2026

ELEV 143	D	TDZE 138
----------	----------	----------



CATEGORY	A	B	C	D
RNP 0.11 DA		513/35	375 (400-%)	
RNP 0.30 DA		587/45	449 (500-%)	

AUTHORIZATION REQUIRED

TDZ/CL Rwy 10 and 33L
 REIL Rwy 15L and 33R
 HIRL all Rwy

RNAV (RNP) Z RWY 15R