

WAAS CH 82207 W33A	APP CRS 335°	Rwy Ldg TDZE 143 Apt Elev 143	8301 143 143
--	------------------------	---	---

RNAV (GPS) Y RWY 33L

BALTIMORE/WASHINGTON INTL THURGOOD MARSHALL (BWI)

RNP APCH-GPS.

▽ For uncompensated Baro-VNAV systems, LNAV/VNAV NA below -11°C or above 54°C.

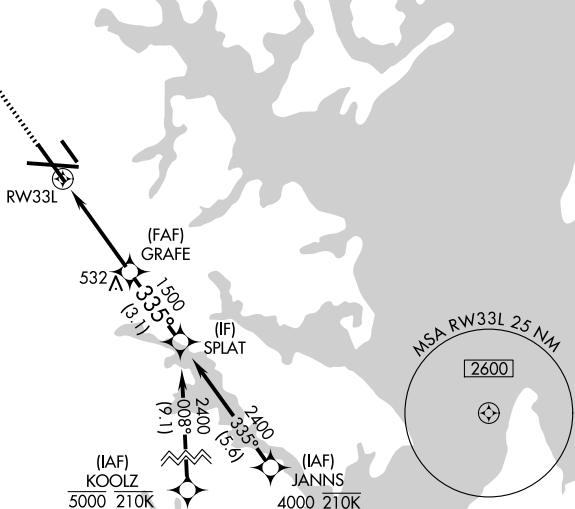
MALS



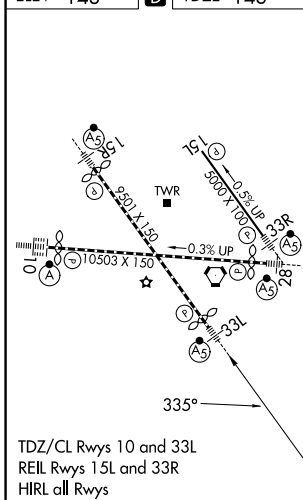
MISSED APPROACH: Climb to 3000 direct BMORE and hold.

D-ATIS 115.1 127.8	POTOMAC APP CON 119.0 282.275 (020°-100°) 124.55 317.425 (101°-130°)	119.7 290.475 (131°-180°) 128.7 307.9 (181°-019°)	BALTIMORE TOWER 119.4 257.8	GND CON 121.9	CLNC DEL 118.05
------------------------------	--	--	--	--------------------------------	----------------------------------

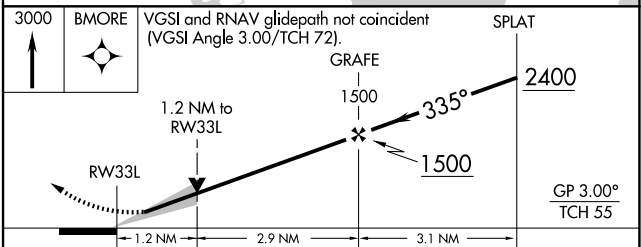
CPDLC



ELEV 143	D	TDZE 143
----------	----------	----------



TDZ/CL Rws 10 and 33L
REIL Rws 15L and 33R
HIRL all Rws



CATEGORY	A	B	C	D
LPV DA		343/18	200 (200-1/2)	
LNAV/VNAV DA		432/24	289 (300-1/2)	
LNAV MDA	600/24	457 (500-1/2)	600/45	457 (500-2/4)
CIRCLING	640-1 497 (500-1)	660-1 517 (600-1)	700-1 1/2 557 (600-1 1/2)	880-2 1/4 737 (800-2 1/4)

NE-3, 16 APR 2026 to 14 MAY 2026

NE-3, 16 APR 2026 to 14 MAY 2026