

NDB MOG 404	APP CRS 356°	Rwy Idg TDZE Apt Elev	N/A N/A 2651
-----------------------	------------------------	--------------------------	---

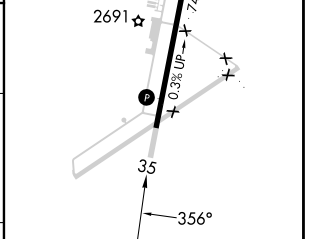
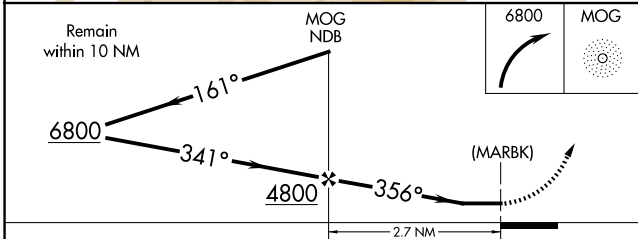
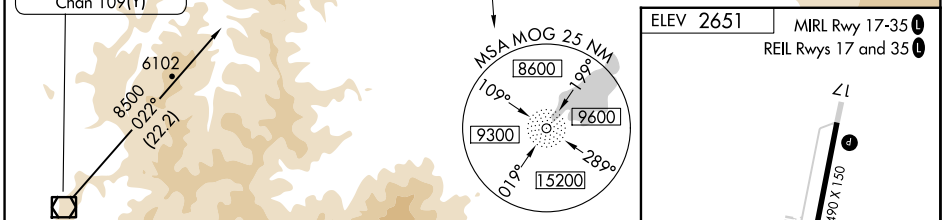
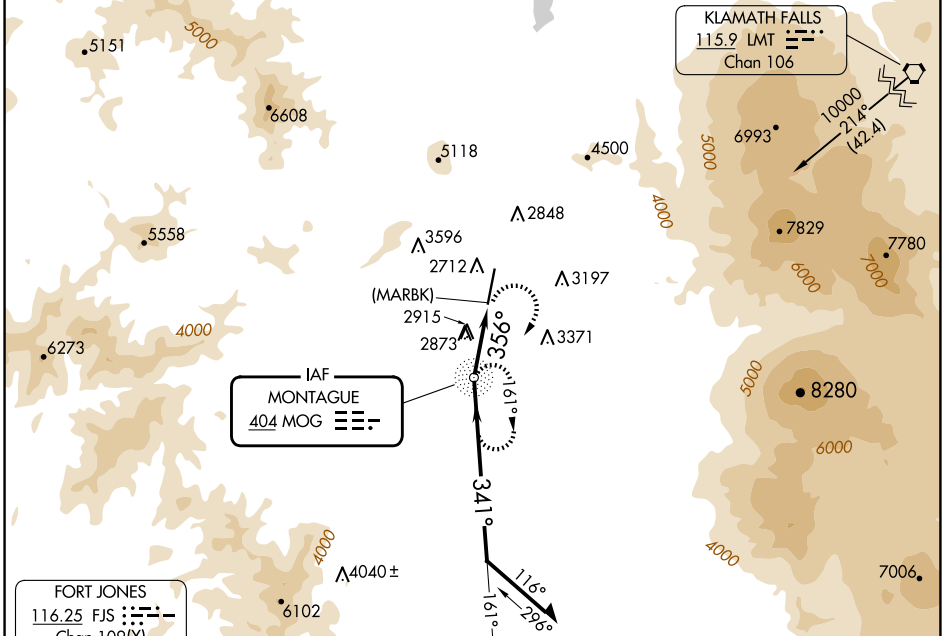
NDB or GPS-A

SISKIYOU COUNTY (SIY)

NA Use Siskiyou County altimeter setting; when not available, use Montague-Yreka Rohrer Fld altimeter setting; when neither received, procedure not authorized. Circling NA for Cats C and D west of Rwy 17-35.

MISSED APPROACH: Climbing right turn to 6800 direct MOG NDB and hold.

ASOS 121.125	SEATTLE CENTER 124.85 306.3	UNICOM 123.0 (CTAF) 0
------------------------	---------------------------------------	---------------------------------



CATEGORY	A	B	C	D	FAF to MAP 2.7 NM					
	3760-1¼ 1109 (1200-1¼)	3760-1½ 1109 (1200-1½)	3980-3 1329 (1400-3)	4220-3 1569 (1600-3)	Knots	60	90	120	150	180
CIRCLING					Min:Sec	2:42	1:48	1:21	1:05	0:54

SW-2, 16 APR 2026 to 14 MAY 2026

SW-2, 16 APR 2026 to 14 MAY 2026