

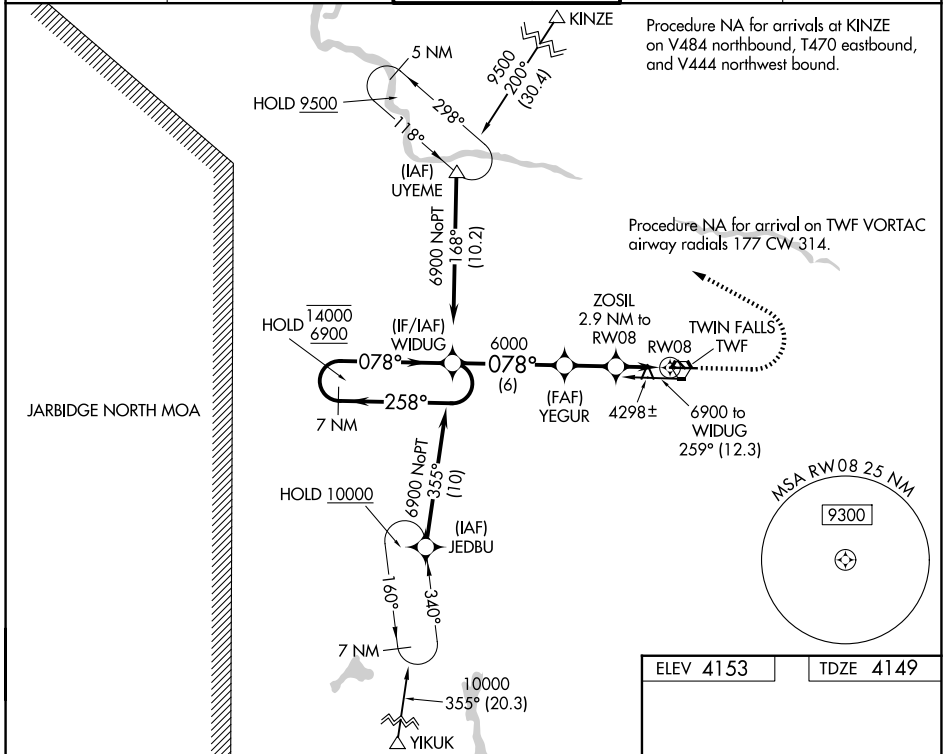
WAAS CH 40211 W08A	APP CRS 078°	Rwy Ldg TDZE Apt Elev	8704 4149 4153
--	------------------------	-----------------------------	---

RNAV (GPS) RWY 8

JOSLIN FLD/MAGIC VALLEY RGNL (TWF')

RNP APCH - GPS.	MISSED APPROACH: Climb to 5000 then climbing left turn to 6000 direct UYEME and hold.
<p>▼ For uncompensated Baro-VNAV systems, LNAV/VNAV NA below -15°C or above 54°C. Circling Rwy 30 NA at night.</p>	

ASOS 135.025	TWIN FALLS APP CON * 126.7 353.75	TWIN FALLS TOWER * 118.2 (CTAF) 0 317.5	GND CON 121.7	UNICOM 122.95
------------------------	---	---	-------------------------	-------------------------

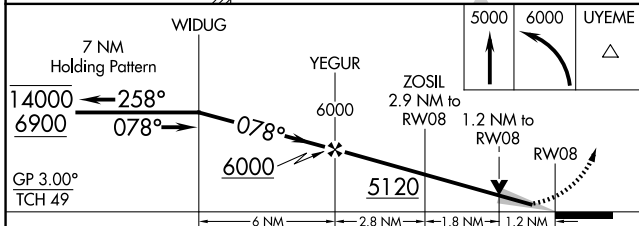


Procedure NA for arrivals at KINZE on V484 northbound, T470 eastbound, and V444 northwest bound.

Procedure NA for arrival on TWF VORTAC airway radials 177 CW 314.

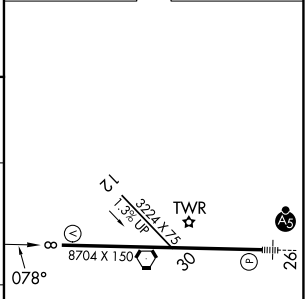
NW-1, 16 APR 2026 to 14 MAY 2026

NW-1, 16 APR 2026 to 14 MAY 2026



ELEV 4153	TDZE 4149
-----------	-----------

CATEGORY	A	B	C	D
LPV DA		4349-3/4	200 (200-3/4)	
LNAV/VNAV DA		4583-1 1/4	434 (500-1 1/4)	
LNAV MDA	4560-1	411 (500-1)	4560-1 1/8	411 (500-1 1/8)
CIRCLING	4700-1 547 (600-1)	4780-1 627 (700-1)	5100-2 3/4 947 (1000-2 3/4)	5100-3 947 (1000-3)



REIL Rwy 8 0
HIRL Rwy 8-26 0