

(LILLI5.LILLI) 23334

JOHN MURTHA JOHNSTOWN/CAMBRIA COUNTY (JST)
AL-898 (FAA) JOHNSTOWN, PENNSYLVANIA

LILLI FIVE DEPARTURE

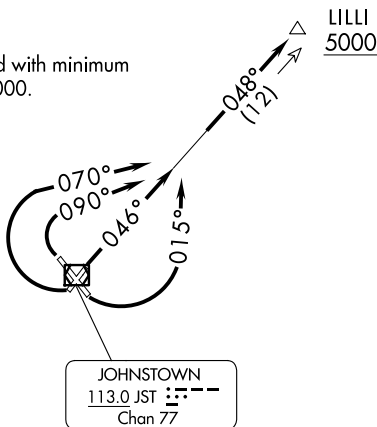
JOHNSTOWN DEP CON ★
121.2 299.2
ATIS
118.325
CLNC DEL
126.85 235.775
GND CON
121.6
JOHNSTOWN TOWER ★
125.75 (CTAF)
CLEVELAND CENTER
124.4 327.1

DME and RADAR required.

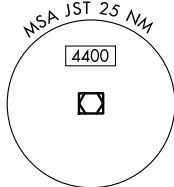
**TOP ALTITUDE:
ASSIGNED BY ATC**

TAKEOFF MINIMUMS:

Rwy 5, 15, 23, 33: Standard with minimum
ATC climb of 235'/NM to 5000.



NOTE: During VFR conditions
watch for opposing traffic
on JST R-048.



NOTE: Chart not to scale.



DEPARTURE ROUTE DESCRIPTION

TAKEOFF RUNWAY 5: Climb on heading 046° to intercept JST R-048, thence...
TAKEOFF RUNWAY 15: Climbing left turn heading 015° to intercept JST R-048, thence...
TAKEOFF RUNWAY 23: Climbing right turn heading 070° to intercept JST R-048, thence...
TAKEOFF RUNWAY 33: Climbing right turn heading 090° to intercept JST R-048, thence...
 ...on JST R-048 to cross LILLI/JST 12 DME at or above 5000 then on (assigned route).

LILLI FIVE DEPARTURE

(LILLI5.LILLI) 30NOV23

JOHNSTOWN, PENNSYLVANIA
JOHN MURTHA JOHNSTOWN/CAMBRIA COUNTY (JST)

NE-4, 16 APR 2026 to 14 MAY 2026

NE-4, 16 APR 2026 to 14 MAY 2026