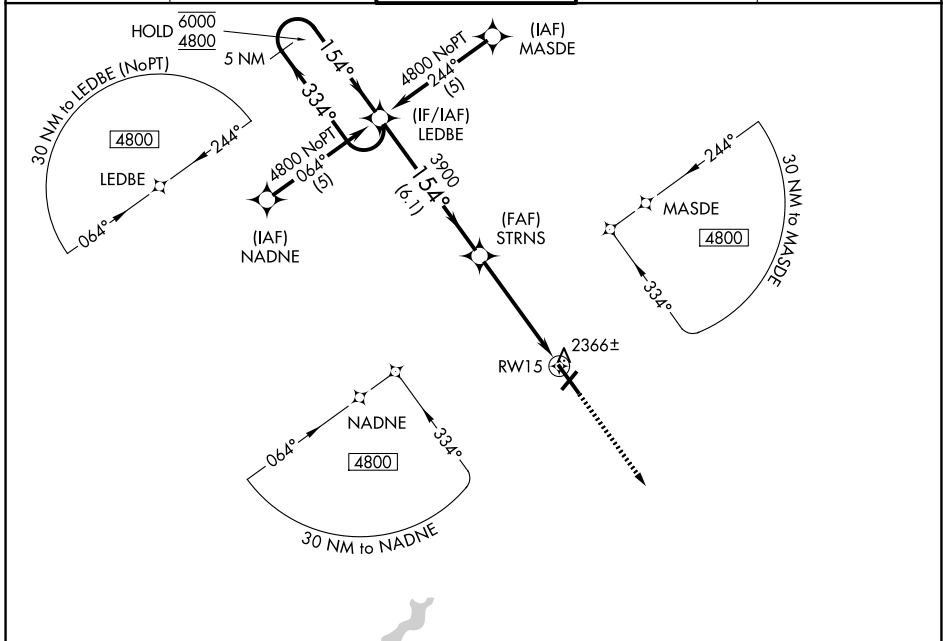


WAAS CH <b>53513</b> <b>W15A</b>	APP CRS <b>154°</b>	Rwy Ldg TDZE Apt Elev	<b>6698</b> <b>2276</b> <b>2284</b>
--	------------------------	-----------------------------	---

# RNAV (GPS) RWY 15

JOHN MURTHA JOHNSTOWN/CAMBRIA COUNTY (JST)

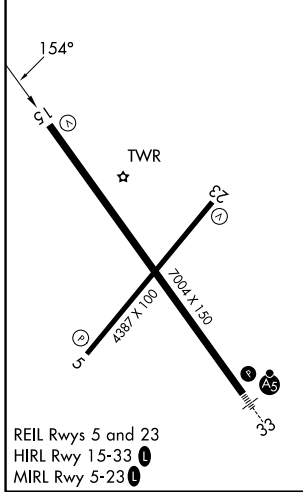
RNP APCH - GPS.		MISSED APPROACH: Climb to 4900 direct COTSO and hold.	
Baro-VNAV NA.			
ATIS <b>118.325</b>	JOHNSTOWN APP CON ★ <b>121.2 299.2</b>	JOHNSTOWN TOWER ★ <b>125.75 (CTAF) 0</b>	GND CON <b>121.6</b>
		UNICOM <b>122.95</b>	



NE-4, 16 APR 2026 to 14 MAY 2026

NE-4, 16 APR 2026 to 14 MAY 2026

ELEV 2284	<b>D</b>	TDZE 2276
-----------	----------	-----------



5 NM Holding Pattern				LEDBE		STRNS		COTSO		
6000 ← 334°				4800 → 154°		3900		4900		
GP 3.00° TCH 52				3900		*1.1 NM to RWY15		*LNNAV only		
				6.1 NM		3.8 NM		1.1		
CATEGORY	A	B	C	D						
LPV DA	2526-3/4				250 (300-3/4)					
LNNAV/VNAV DA	2595-1				319 (400-1)					
LNNAV MDA	2680-1		404 (400-1)		2680-1 1/8		404 (400-1 1/8)		2680-1 1/4	
CIRCLING	2700-1		416 (500-1)		2880-1		596 (600-1)		2880-1 1/2	
					596 (600-1 1/2)		3000-2 1/4		716 (800-2 1/4)	