

WAAS CH <b>53429</b> <b>W23A</b>	APP CRS <b>229°</b>	Rwy Ldg TDZE Apt Elev	<b>4387</b> <b>2284</b> <b>2284</b>
--	------------------------	-----------------------------	---

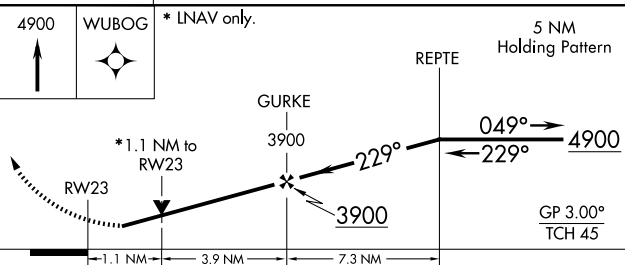
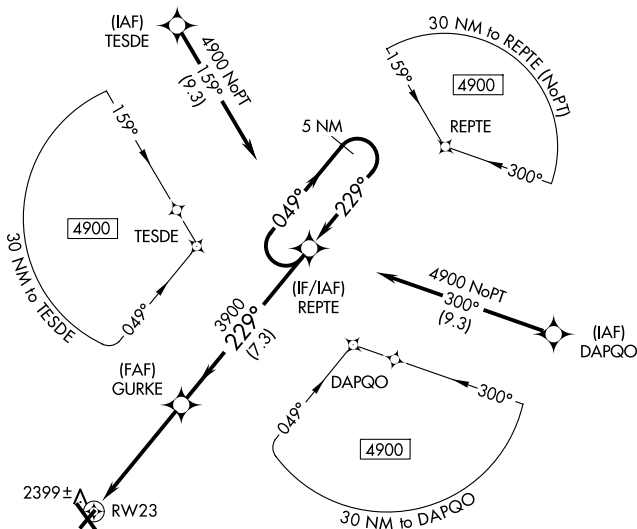
# RNAV (GPS) RWY 23

JOHN MURTHA JOHNSTOWN/CAMBRIA COUNTY (JST)

**⚠** For uncompensated Baro-VNAV systems, LNAV/VNAV NA below -19°C (-2°F) or above 29°C (84°F). When local altimeter setting not received, procedure NA.  
**⚠** DME/DME RNP-0.3 NA. Rwy 23 helicopter visibility reduction below ¾ SM NA.

MISSED APPROACH: Climb to 4900 direct WUBOG and hold.

ATIS <b>118.325</b>	JOHNSTOWN APP CON ★ <b>121.2 299.2</b>	JOHNSTOWN TOWER ★ <b>125.75 (CTAF) 0</b>	GND CON <b>121.6</b>	UNICOM <b>122.95</b>
------------------------	---	---	-------------------------	-------------------------



ELEV 2284	<b>D</b>	TDZE 2284
-----------	----------	-----------

