

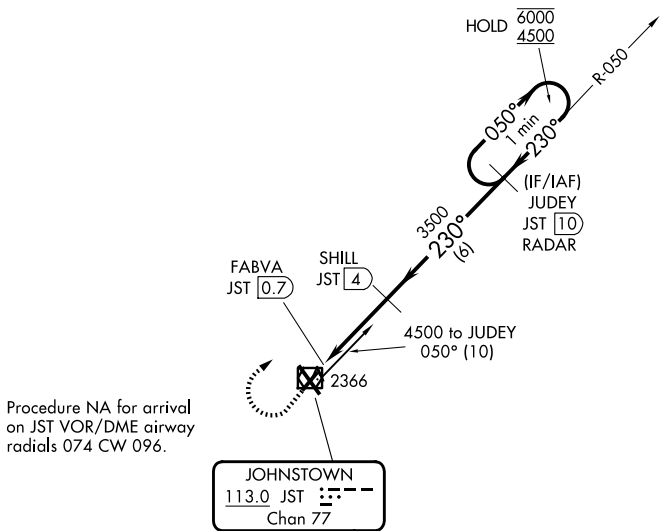
VOR/DME JST 113.0 Chan 77	APP CRS 230°	Rwy Ldg TDZE 4387 2284	Apt Elev 2284
---	------------------------	--	-------------------------

VOR Z RWY 23

JOHN MURTHA JOHNSTOWN/CAMBRIA COUNTY (JST)

DME required.	MISSED APPROACH: Climb to 3000 then climbing right turn to 4500 on heading 075° and JST VOR/DME R-050 to JUDEY/JST 10 DME/RADAR and hold.
▼ ▲ Rwy 23 helicopter visibility reduction below ¾ SM NA.	

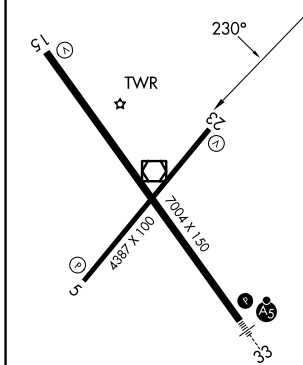
ATIS 118.325	JOHNSTOWN APP CON ★ 121.2 299.2	JOHNSTOWN TOWER ★ 125.75 (CTAF) 0	GND CON 121.6	UNICOM 122.95
------------------------	---	---	-------------------------	-------------------------



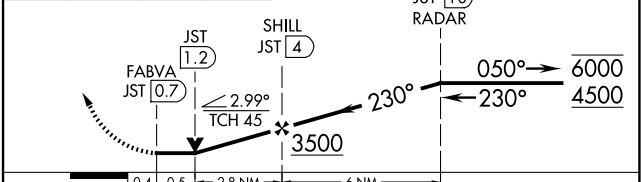
NE-4, 16 APR 2026 to 14 MAY 2026

NE-4, 16 APR 2026 to 14 MAY 2026

ELEV 2284	D	TDZE 2284
-----------	---	-----------



3000	4500	JST R-050	JUDEY JST 10 RADAR	One Minute Holding Pattern
------	------	-----------	--------------------	----------------------------



CATEGORY	A	B	C	D
S-23	2620-1 336 (400-1)			
CIRCLING	2700-1 416 (500-1)	2880-1 596 (600-1)	2880-1½ 596 (600-1½)	3000-2¼ 716 (800-2¼)

REIL Rws 5 and 23
HIRL Rwy 15-33
MIRL Rwy 5-23

VOR Z RWY 23