

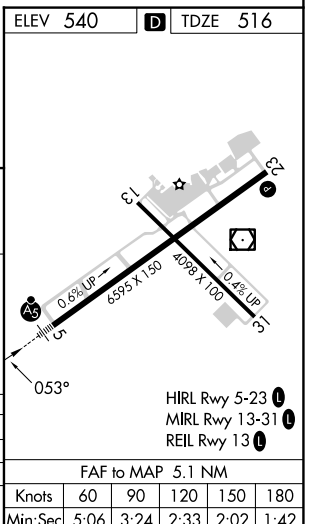
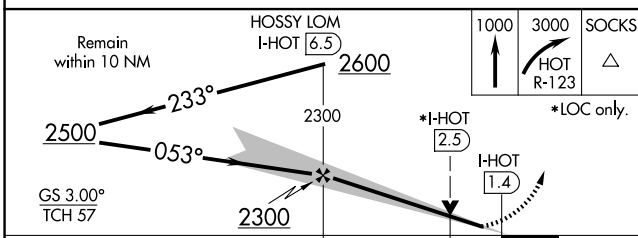
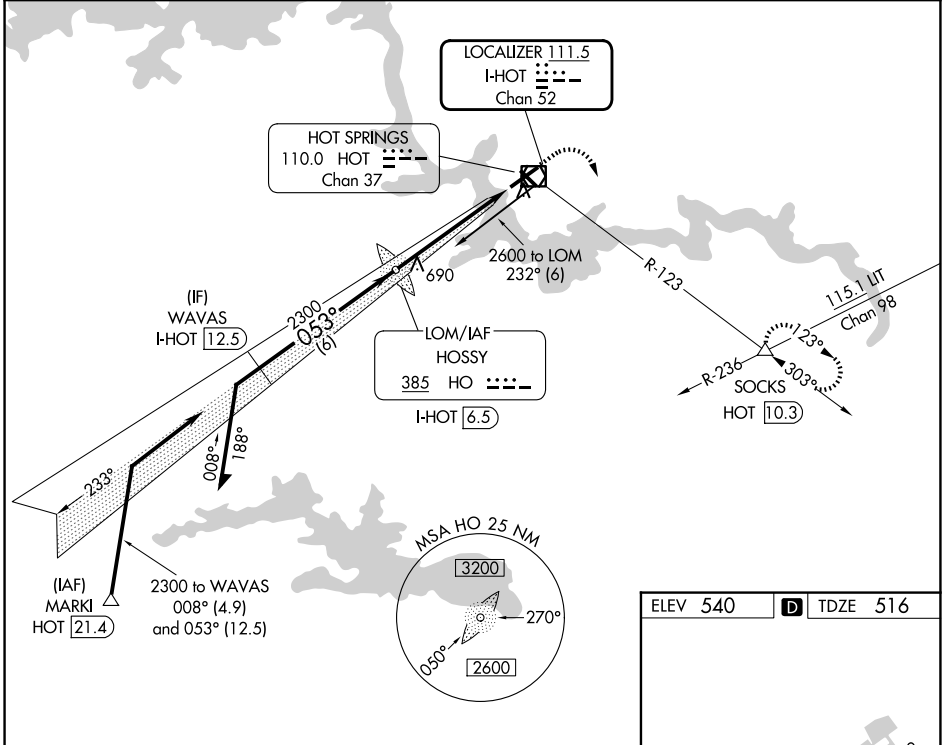
LOC/DME I-HOT <b>111.5</b> Chan <b>52</b>	APP CRS <b>053°</b>	Rwy Ldg <b>6595</b> TDZE <b>516</b> Apt Elev <b>540</b>
---	------------------------	---

# ILS or LOC RWY 5

MEML FLD (HOT)

ADF or DME required.	MALSR 	MISSED APPROACH: Climb to 1000 then climbing right turn to 3000 on HOT VOR/DME R-123 to SOCKS INT/HOT 10.3 DME and hold.
NA Circling NA northwest of Rwy 5-23. Use I-HOT DME when on localizer course.		

ASOS <b>119.925</b>	MEMPHIS CENTER <b>128.475 377.15</b>	UNICOM <b>123.0</b> (CTAF)
------------------------	---	-------------------------------



CATEGORY	A	B	C	D
S-ILS 5	732-1/2 216 (200-1/2)			
S-LOC 5	940-1/2	424 (400-1/2)	940-3/4	424 (400-3/4)
CIRCLING	1080-1 540 (600-1)		1380-2 1/2	1620-3
			840 (900-2 1/2)	1080 (1100-3)

FAF to MAP 5.1 NM					
Knots	60	90	120	150	180
Min:Sec	5:06	3:24	2:33	2:02	1:42

SC-1, 16 APR 2026 to 14 MAY 2026

SC-1, 16 APR 2026 to 14 MAY 2026