

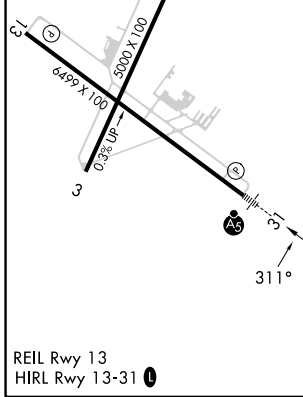
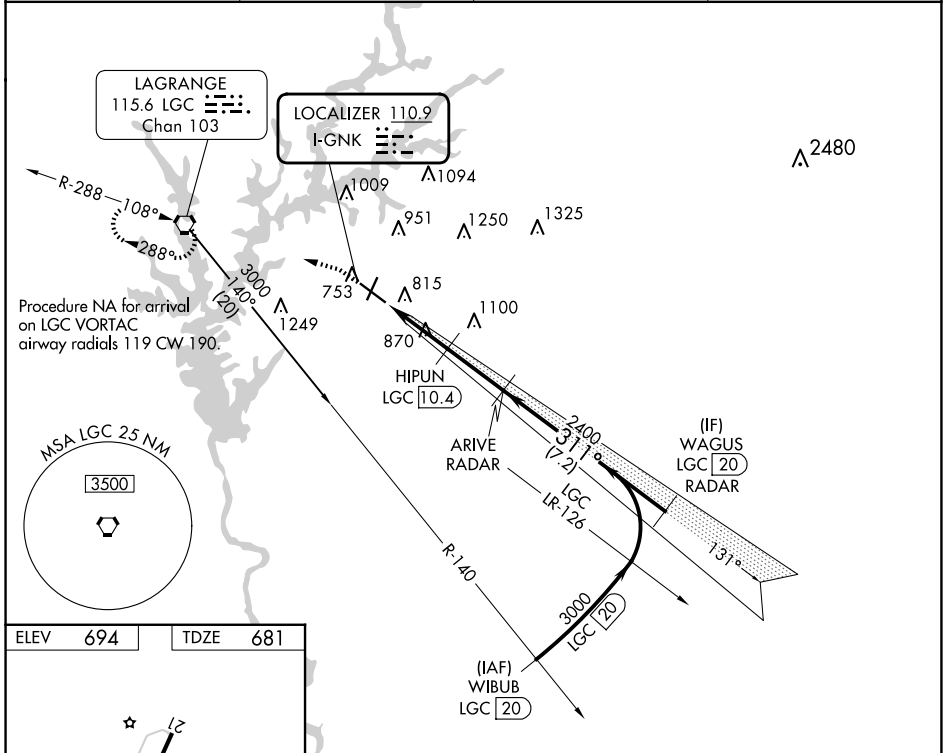
LOC I-GNKG 110.9	APP CRS 311°	Rwy ldg TDZE Apt Elev 6499 681 694
----------------------------	------------------------	--

ILS or LOC RWY 31

LAGRANGE/CALLAWAY (LGC)

DME required for procedure entry. RADAR and DME required for LOC only.	MALSR 	MISSED APPROACH: Climb to 1200 then climbing left turn to 2400 direct LGC VORTAC and hold.
Circling Rwy 13, 21 NA at night. DME from LGC VORTAC. Simultaneous reception of I-GNKG and LGC DME required.		

AWOS-3 126.325	ATLANTA APP CON* 125.5 323.1	CINC DEL 119.25	UNICOM 122.975 (CTAF)
--------------------------	--	---------------------------	---------------------------------



1200	2400	LGC	WAGUS LGC 20 RADAR
*LOC only.		HIPUN LGC 10.4	ARIVE RADAR
*LOC only.		LGC 7.7	LGC 8.9
LOC only.		1600	2400
*LOC only.		311°	3000
*LOC only.		1.3	1.5
*LOC only.		2.5 NM	7.2 NM
*LOC only.		GS 3.00°	TCH 41
CATEGORY	A	B	C
S-ILS 31	881-1/2		200 (200-1/2)
S-LOC 31	1120-1/2	439 (500-1/2)	1120-3/4 439 (500-3/4)
CIRCLING	1280-1	586 (600-1)	1540-2 1/2 1600-3 846 (900-2 1/2) 906 (1000-3)

SE-4, 16 APR 2026 to 14 MAY 2026

SE-4, 16 APR 2026 to 14 MAY 2026