

RIDGECREST, CALIFORNIA

HI-TACAN Z RWY 32

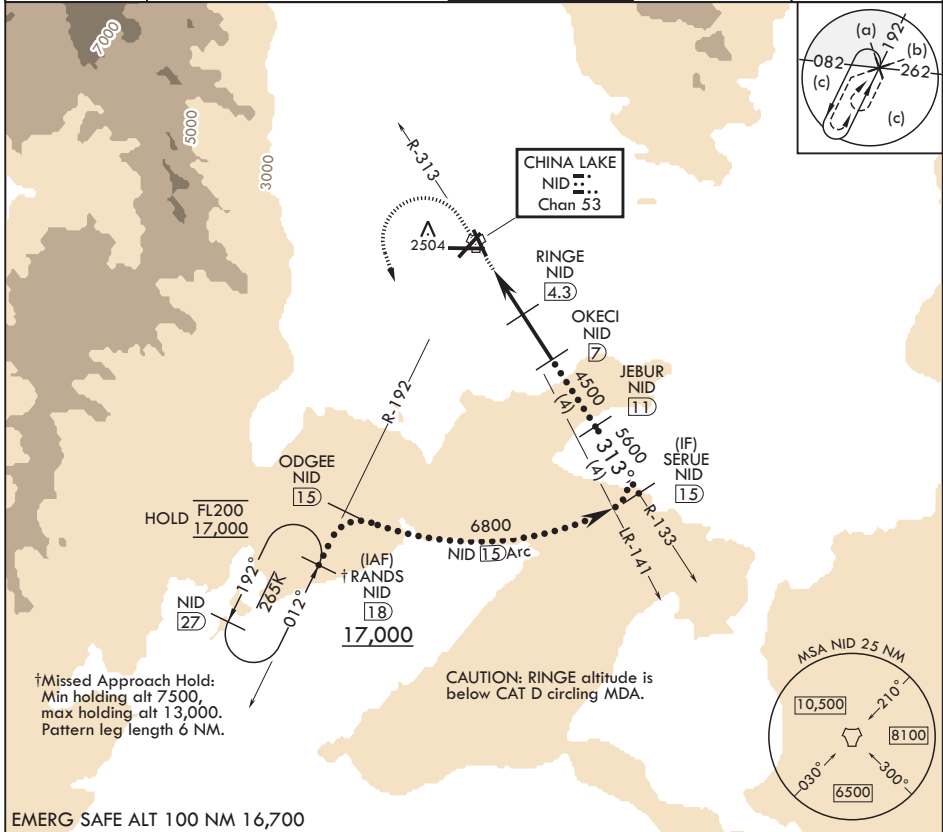
TACAN NID Chan 53	APCH CRS 313°	Rwy ldg TDZE Arprt Elev	9013 2241 2288
----------------------	------------------	-------------------------------	---

-(USN)

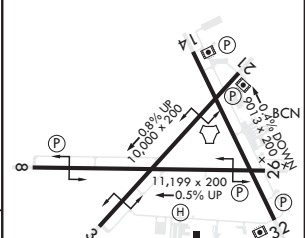
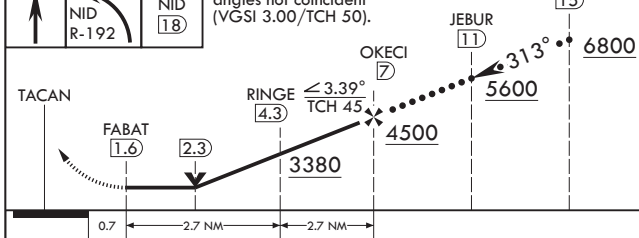
CHINA LAKE NAWS (ARMITAGE FLD) (KNID)

RADAR required MISSED APPROACH: Climb to 3600, then climbing left turn to 7500 to intercept NID TACAN R-192 to RANDS and hold. Continue climb-in-hold to 7500.

ATIS★ 322.375	JOSHUA APP CON/DEP CON 133.65 348.7	TOWER★ 120.15 340.2	GND CON 350.3	CLNC DEL 254.25
-------------------------	---	-------------------------------	-------------------------	---------------------------



EMERG SAFE ALT 100 NM 16,700	ELEV 2288	TDZE 2241
------------------------------	-----------	-----------



CATEGORY	C	D	E
S-32	2740-1 $\frac{3}{8}$	499	(500-1 $\frac{3}{8}$)
CIRCLING	2820-1 $\frac{1}{2}$ 536 (600-1 $\frac{1}{2}$)	3700-3 1416 (1500-3)	NA

RIDGECREST, CALIFORNIA 35°41'N - 117°42'W CHINA LAKE NAWS (ARMITAGE FLD) (KNID)

Amdt 6 12JUN25

HI-TACAN Z RWY 32

SW-3, 16 APR 2026 to 14 MAY 2026

SW-3, 16 APR 2026 to 14 MAY 2026