

RIDGECREST, CALIFORNIA

# RNAV (GPS) RWY 03

APCH CRS	Rwy Idg	10,000
028°	TDZE	2284
	Arprt Elev	2288

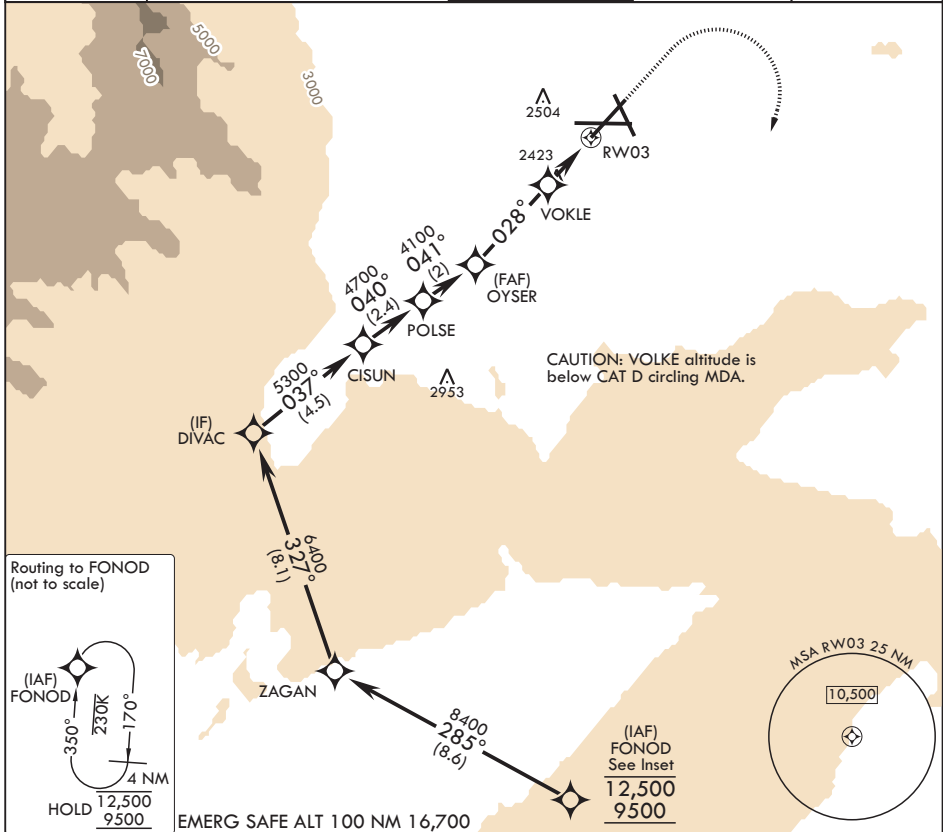
- (USN)

CHINA LAKE NAWS (ARMITAGE FLD) (KNID)

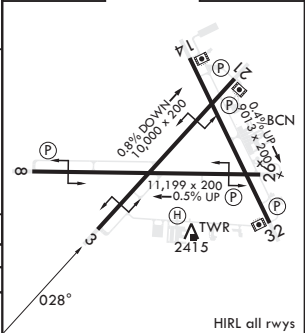
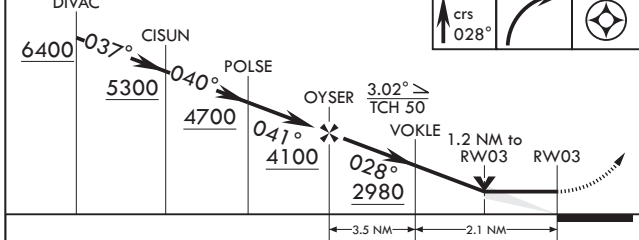
RNP APCH-GPS

MISSED APPROACH: (Do not exceed 185 KIAS until initial turn completion.) Climb to 3600 then climbing right turn to 9500 direct FONOD and hold, continue climb-in-hold to 9500.

ATIS★ 322.375	JOSHUA APP CON/DEP CON 133.65 348.7	TOWER★ 120.15 340.2	GND CON 350.3	CLNC DEL 254.25
------------------	--	------------------------	------------------	--------------------



DIVAC	3600	9500	FONOD	ELEV 2288	TDZE 2284
-------	------	------	-------	-----------	-----------



CATEGORY	A	B	C	D
LNAV MDA	2720-1 436 (500-1)	2720-1¼ 436 (500-1¼)		
CIRCLING	2780-1 496 (500-1)	2820-1 536 (600-1)	2820-1½ 536 (600-1½)	3700-3 1416 (1500-3)

RIDGECREST, CALIFORNIA

35°41'N - 117°42'W

CHINA LAKE NAWS (ARMITAGE FLD) (KNID)

Amdt 1 12JUN25

# RNAV (GPS) RWY 03

SW-3, 16 APR 2026 to 14 MAY 2026

SW-3, 16 APR 2026 to 14 MAY 2026