

RIDGECREST, CALIFORNIA

# RNAV (GPS) RWY 32

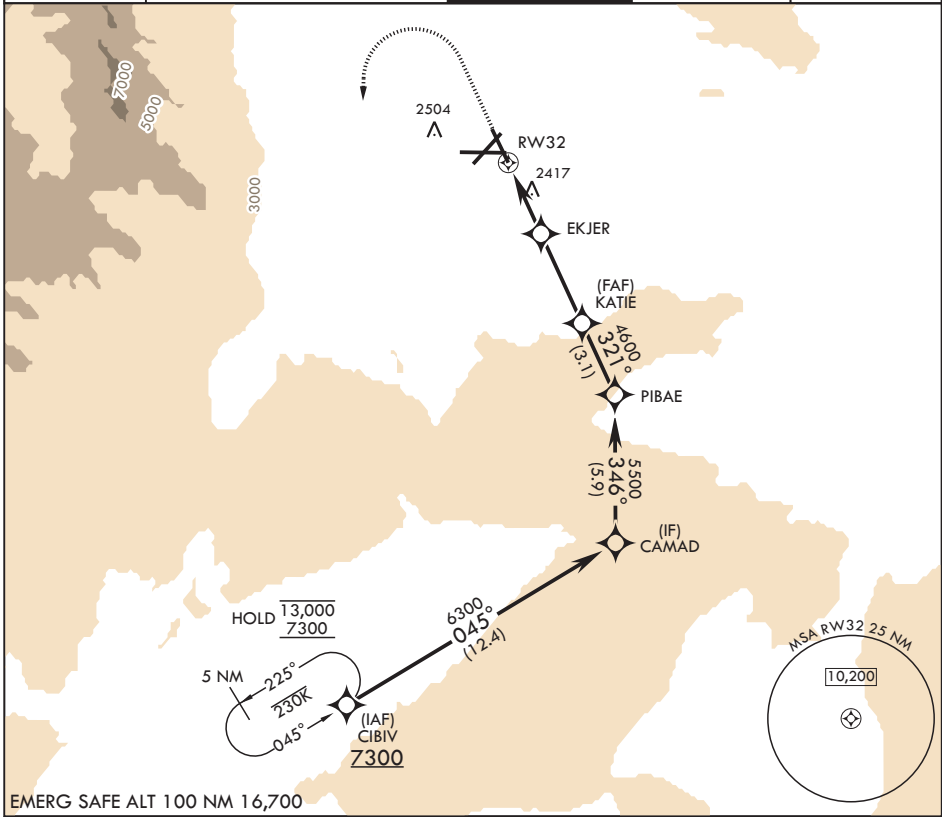
APCH CRS 321°	Rwy Idg TDZE Arprt Elev	9013 2241 2288
------------------	-------------------------------	----------------------

- (USN)

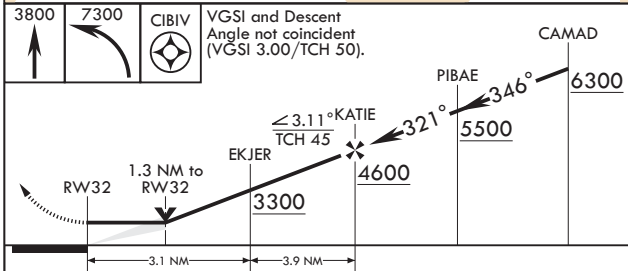
CHINA LAKE NAWS (ARMITAGE FLD) (KNID)

RNP APCH-GPS	MISSED APPROACH: (Do not exceed 225 KIAS until initial turn completion) Climb to 3800 then climbing left turn to 7300 direct CIBIV and hold.
RADAR required	

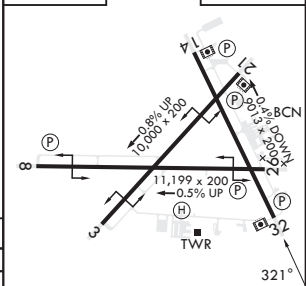
ATIS★ 322.375	JOSHUA APP CON/DEP CON 133.65 348.7	TOWER★ 120.15 340.2	GND CON 350.3	CLNC DEL 254.25
------------------	--	------------------------	------------------	--------------------



EMERG SAFE ALT 100 NM 16,700



ELEV 2288	TDZE 2241
-----------	-----------



CATEGORY	A	B	C	D
LNAV MDA	2700-1	459 (500-1)	2700-1½	459 (500-1½)
◻ CIRCLING	2780-1 496 (500-1)	2820-1 536 (600-1)	2820-1½ 536 (600-1½)	3700-3 1416 (1500-3)

HIRL all rwys

RIDGECREST, CALIFORNIA

35°41'N - 117°42'W

CHINA LAKE NAWS (ARMITAGE FLD) (KNID)

Amdt 6 12JUN25

# RNAV (GPS) RWY 32

SW-3, 16 APR 2026 to 14 MAY 2026

SW-3, 16 APR 2026 to 14 MAY 2026