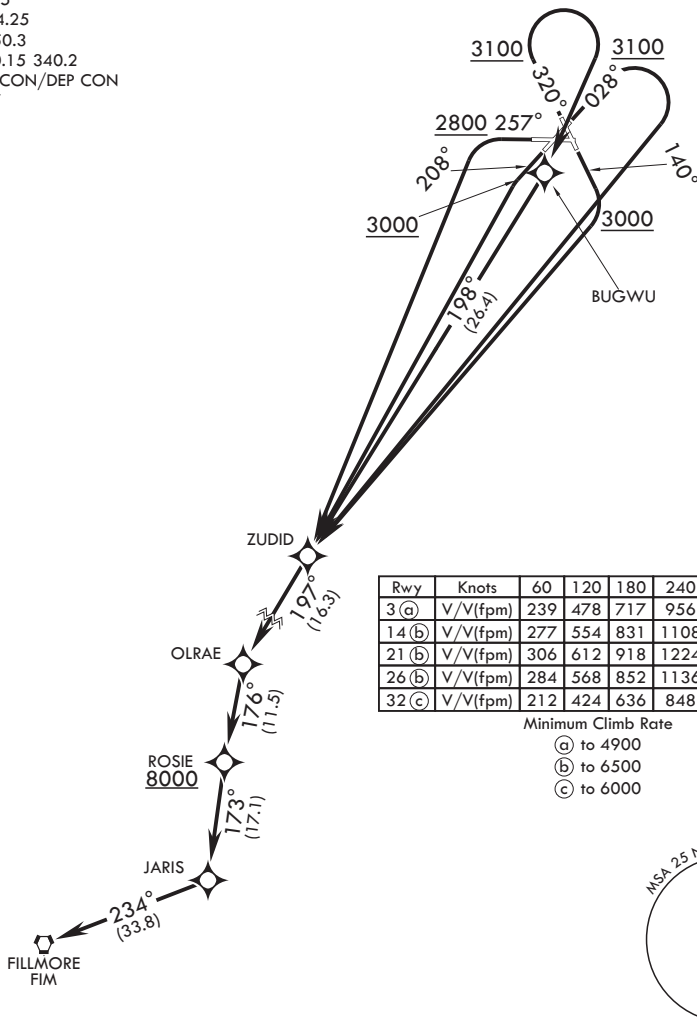


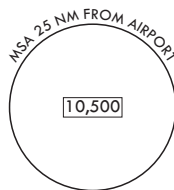
ATIS \* 322.375  
 CLNC DEL 254.25  
 GND CON 350.3  
 TOWER \* 120.15 340.2  
 JOSHUA APP CON/DEP CON  
 133.65 348.7



Rwy	Knots	60	120	180	240	300	360
3 (a)	V/V(fpm)	239	478	717	956	1195	1434
14 (b)	V/V(fpm)	277	554	831	1108	1385	1662
21 (b)	V/V(fpm)	306	612	918	1224	1530	1836
26 (b)	V/V(fpm)	284	568	852	1136	1420	1704
32 (c)	V/V(fpm)	212	424	636	848	1060	1272

Minimum Climb Rate

- (a) to 4900
- (b) to 6500
- (c) to 6000



DEPARTURE ROUTE DESCRIPTION

TAKEOFF RWY 3: Climb heading 028° to 3100, then climbing right turn direct ZUDID. Thence...

TAKEOFF RWY 14: Climb heading 140° to 3000, then climbing right turn direct ZUDID. Thence...

TAKEOFF RWY 21: Climb heading 208° to 3000, then climbing left turn direct ZUDID. Thence...

TAKEOFF RWY 26: Climb heading 257° to 2800, then climbing left turn direct ZUDID. Thence...

TAKEOFF RWY 32: Climb heading 320° to 3100, then climbing right turn direct BUGWU, then direct ZUDID. Thence...

...from over ZUDID proceed via depicted route to FILLMORE VORTAC. Cross ROSIE at or above 8000 or as assigned.