

SALTD EIGHT DEPARTURE (SALTD8.SALTD)

CHINA LAKE NAWs (ARMITAGE FLD) (KNID)
RIDGECREST, CALIFORNIA

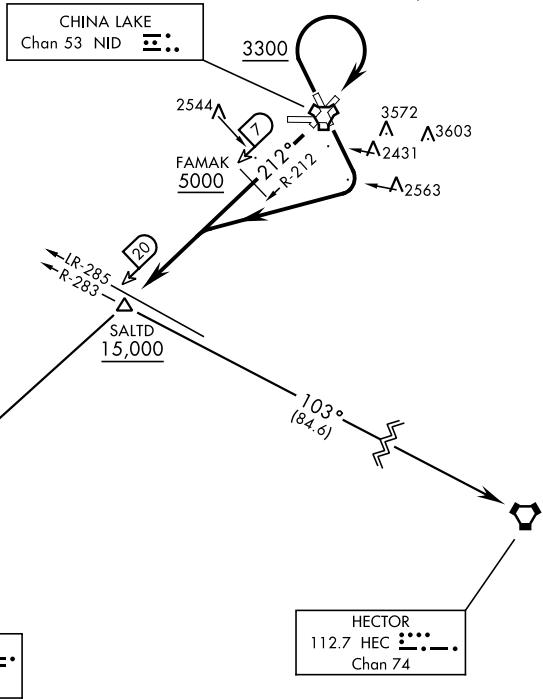
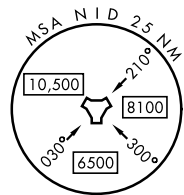
ATIS *322.375
 CLNC DEL
 254.25
 GND CON
 350.3
 CHINA LAKE TOWER *
 120.15 340.2
 JOSHUA DEP CON
 133.65 348.7

Rwy	Knots	60	120	180	240	300	360
*14	V/V(fpm)	232	464	696	928	1160	1392
†14	V/V(fpm)	617	1234	1851	2468	3085	3702
†21	V/V(fpm)	675	1350	2025	2700	3375	4050
†32	V/V(fpm)	500	1000	1500	2000	2500	3000

* Minimum Climb Rate to 4000
 † ATC Climb Rate to 15,000

Rwy 14: Do not exceed 240 KIAS until crossing NID TACAN R-212.

Rwy 32: Do not exceed 240 KIAS until crossing NID TACAN.



SW-3, 16 APR 2026 to 14 MAY 2026

SW-3, 16 APR 2026 to 14 MAY 2026

DEPARTURE ROUTE DESCRIPTION

TAKEOFF RUNWAY 14: Climbing right turn to intercept NID TACAN R-212, then direct SALTD. From SALTD, proceed via assigned transition or RADAR vectors to join assigned route. Cross SALTD at or above 15,000. Thence...

TAKEOFF RUNWAY 21: Climb via NID TACAN R-212 to FAMAK, then direct SALTD. From SALTD, proceed via assigned transition or RADAR vectors to join assigned route. Cross FAMAK at or above 5,000 and cross SALTD at or above 15,000. Thence...

TAKEOFF RUNWAY 32: Climb via NID TACAN R-322 to 3300 then climbing right turn direct NID, then via NID R-212 to FAMAK, then direct SALTD. From SALTD, proceed via assigned transition or RADAR vectors to join assigned route. Cross FAMAK at or above 5000 and cross SALTD at or above 15,000. Thence...

GORMAN TRANSITION (SALTD8.GMN): Via GMN VORTAC R-032 to GMN.

HECTOR TRANSITION (SALTD8.HEC): Via HEC VORTAC R-283 to HEC.

SALTD EIGHT DEPARTURE (SALTD8.SALTD)

Orig 12JUN25

RIDGECREST, CALIFORNIA
CHINA LAKE NAWs (ARMITAGE FLD) (KNID)