

LOC/DME I-SND 108.9 Chan 26	APP CRS 095°	Rwy Ldg 10002 TDZE 55 Apt Elev 55
--	------------------------	--

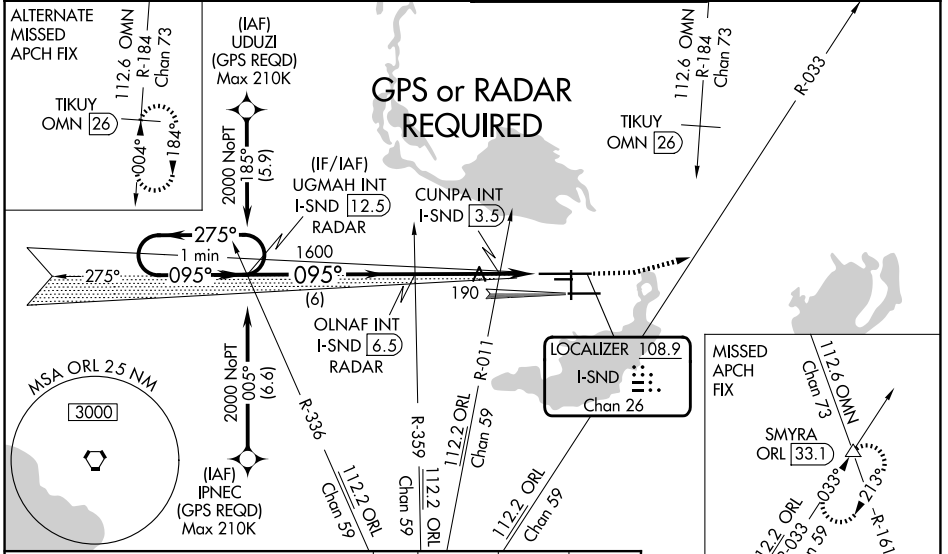
ILS or LOC RWY 9L

ORLANDO SANFORD INTL (SF7B)

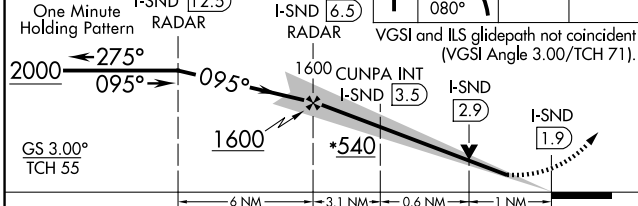
⚠ VDP NA with Orlando Exec altimeter setting. When local altimeter setting not received, use Orlando Exec altimeter setting: increase DA to 298 feet; increase all MDAs 60 feet and visibility Cats C and D 1/4 SM. Simultaneous approach authorized with Rwy 9R. Circling to Rwy 27C NA at night.

MALS
MISSED APPROACH: Climb to 500 then climbing left turn to 2000 on heading 080° and ORL VORTAC R-033 to SMYRA INT/ORL 33.1 DME and hold.

ATIS 125.975	ORLANDO APP CON 135.3 351.9 (N) 125.225 351.9 (S)	SANFORD TOWER ★ 120.3 (CTAF) 0 254.35	GND CON 121.35 254.35
------------------------	---	---	---------------------------------

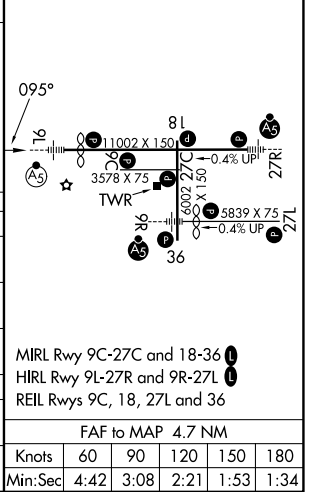


*600 when using Orlando Exec altimeter setting.	500	2000	SMYRA
One Minute Holding Pattern	UGMAH INT I-SND 12.5 RADAR	OLNAF INT I-SND 6.5 RADAR	ORL R-033



ELEV 55	TDZE 55
---------	---------

CATEGORY	A	B	C	D
S-ILS 9L	255-1/2 200 (200-1/2)			
S-LOC 9L	540-1/2	485 (500-1/2)	540-1	485 (500-1)
CIRCLING	580-1	525 (600-1)	600-1 1/2 545 (600-1 1/2)	640-2 585 (600-2)
CUNPA FIX MINIMUMS (DUAL VOR RECEIVER OR DME REQUIRED)				
S-LOC 9L	460-1/2	405 (500-1/2)	460-3/4	405 (500-3/4)
CIRCLING	580-1	525 (600-1)	600-1 1/2 545 (600-1 1/2)	640-2 585 (600-2)



SE-3, 16 APR 2026 to 14 MAY 2026

SE-3, 16 APR 2026 to 14 MAY 2026

MIRL Rwy 9C-27C and 18-36	1
HIRL Rwy 9L-27R and 9R-27L	1
REIL Rwy 9C, 18, 27L and 36	1
FAF to MAP 4.7 NM	
Knots	60 90 120 150 180
Min:Sec	4:42 3:08 2:21 1:53 1:34