

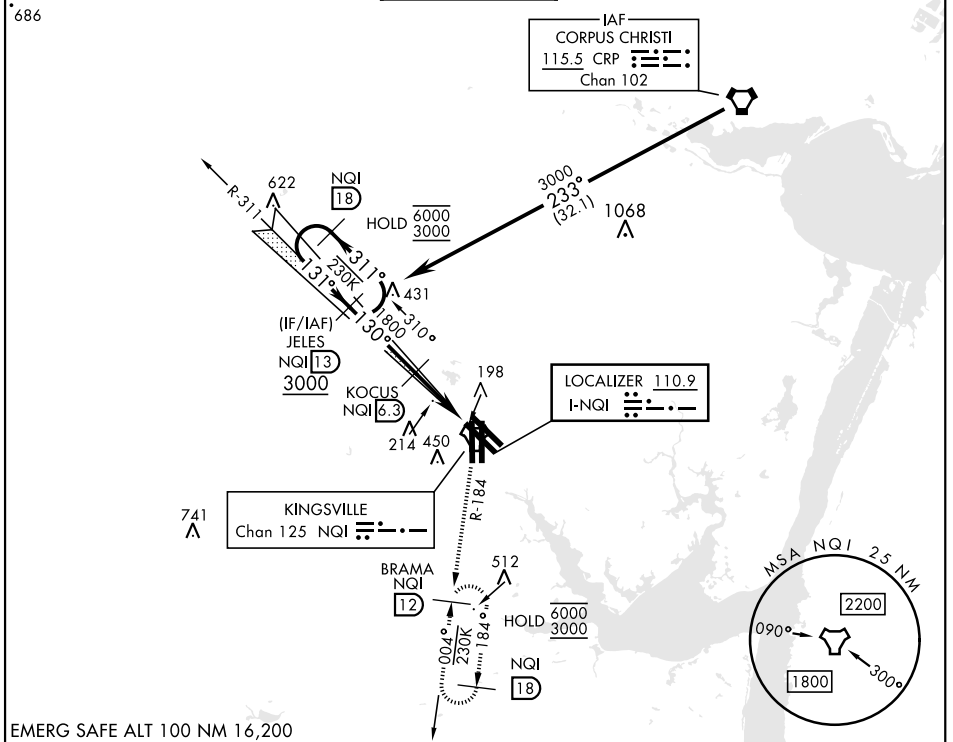
ILS X or LOC X RWY 13R

LOC I-NQI 110.9	APCH CRS 130°	Rwy ldg TDZE Arprt Elev 8000 50 50	[USN]	KINGSVILLE NAS (KNQI)
---------------------------	-------------------------	--	-------	-----------------------

TACAN required

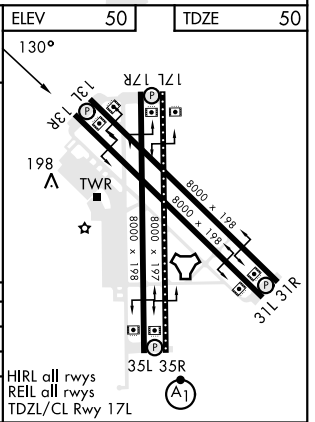
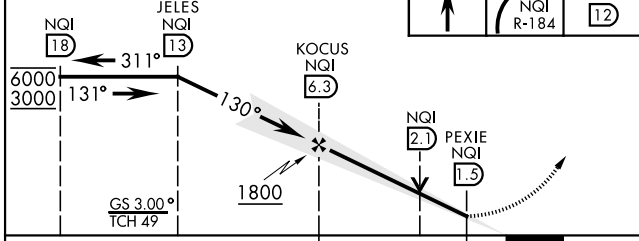
MISSED APPROACH: Climb to 500 then climbing right turn to 3000 to intercept NQI TACAN R-184 to BRAMA and hold.

ATIS ★ 282.25	APP CON 119.9 290.45	TOWER ★ 124.1 377.05	GND CON 239.05	CLNC DEL 328.4	ASR/PAR
-------------------------	--------------------------------	--------------------------------	--------------------------	--------------------------	---------



EMERG SAFE ALT 100 NM 16,200

VGSI and ILS glidepath not coincident (VGSI TCH 35).	ELEV 50	TDZE 50
--	---------	---------



CATEGORY	A	B	C	D
S-ILS 13R		250-¾	200	(200-¾)
S-LOC 13R	460-1	410 (500-1)	460-1½	410 (500-1½)
CIRCLING	540-1	490 (500-1)	710 (800-2) 710 (800-2)	760-2¼ 710 (800-2¼)

KINGSVILLE, TEXAS 27°30'N-97°49'W KINGSVILLE NAS (KNQI)

ILS X or LOC X RWY 13R

SC-3, 16 APR 2026 to 14 MAY 2026

SC-3, 16 APR 2026 to 14 MAY 2026