

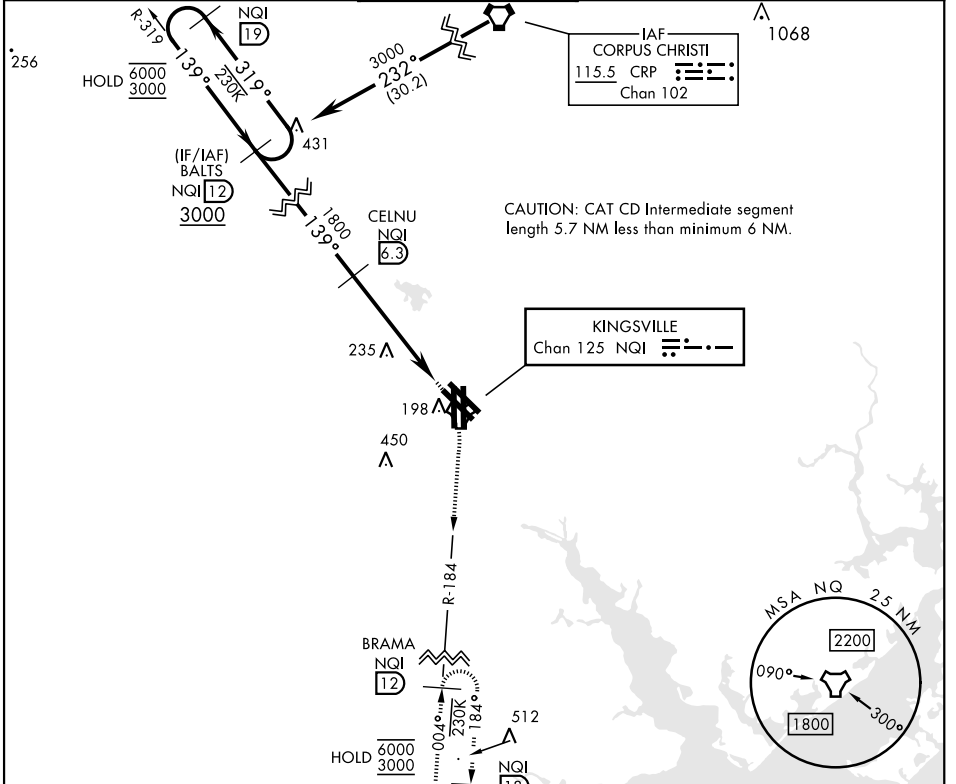
TACAN RWY 13L/R

TACAN NQI Chan 125	APCH CRS 139°	Rwy 13L Idg TDZE 49 Arprt Elev 50	Rwy 13R Idg TDZE 50 Arprt Elev 50
-----------------------	------------------	---	---

[USN] KINGSVILLE NAS (KNQI)

MISSPED APPROACH: Climbing right turn to 3000 to intercept NQI TACAN R-184 to BRAMA and hold.

ATIS ★ 282.25	APP CON 119.9 290.45	TOWER ★ 124.1 377.05	GND CON 239.05	CLNC DEL 328.4	ASR/PAR
------------------	-------------------------	-------------------------	-------------------	-------------------	---------



CAUTION: CAT CD Intermediate segment length 5.7 NM less than minimum 6 NM.

EMERG SAFE ALT 100 NM 16,200

ELEV 50	TDZE 49 13L TDZE 50 13R
---------	----------------------------

3000

NQI R-184

BRAMA NQI 12

139°

NQI 19

BALTS NQI 12

6000

3000

319°

139°

139°

1800

CELNU NQI 6.3

FEDOB NQI 1.5

NQI 2.3

NQI TACAN

4.8 NM

0.5

CATEGORY	A	B	C	D
S-13L	520-1 471 (500-1)	520-1 3/4 471 (500-1 3/4)	520-1 3/8 470 (500-1 3/8)	520-1 3/8 470 (500-1 3/8)
S-13R	520-1 470 (500-1)	520-1 3/8 470 (500-1 3/8)	520-1 3/8 470 (500-1 3/8)	520-1 3/8 470 (500-1 3/8)
CIRCLING	540-1 490 (500-1)	710 (800-2)	710 (800-2)	710 (800-2 1/4)

HIRL all rwys
REL all rwys
TDZL/CL Rwy 17L

35L 35R

TWR

13L 13R

17L 17R

8000 x 198

8000 x 198

8000 x 198

311 31R

(A1)

TACAN RWY 13L/R

SC-3, 16 APR 2026 to 14 MAY 2026

SC-3, 16 APR 2026 to 14 MAY 2026