

# TACAN Y RWY 35R

TACAN NQI Chan 125	APCH CRS 004°	Rwy Ldg 8000 TDZE 48 Arprt Elev 50
-----------------------	------------------	---

[USN]

KINGSVILLE NAS (KNQI)

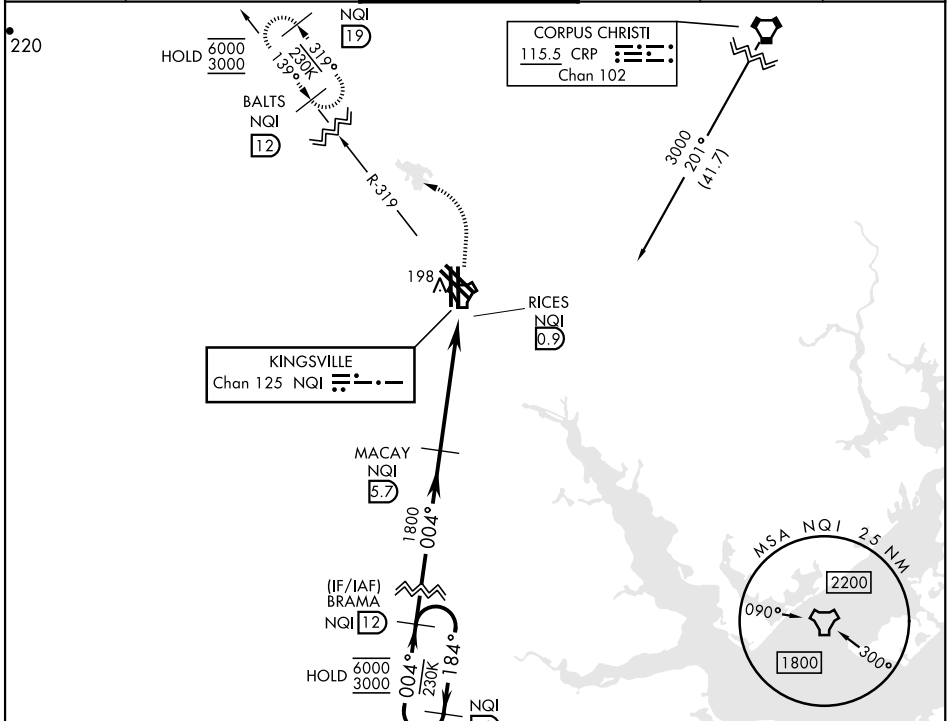
ALSF-1
 



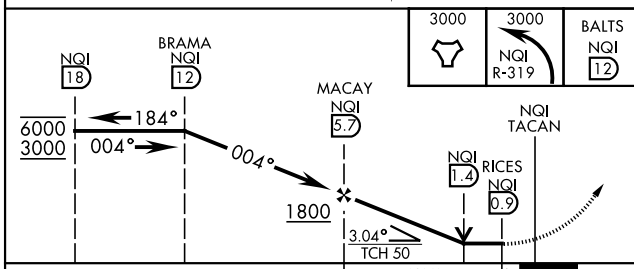
**MISSED APPROACH:** Climb to 3000 direct NQI TACAN and climbing left turn to intercept NQI R-319 to BALTS and hold. Continue climb-in-hold to 3000.

\* When ALS inop, increase vis to 1 mile.

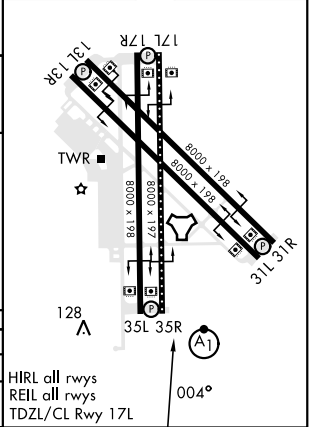
ATIS ★ <b>282.25</b>	APP CON <b>119.9 290.45</b>	TOWER★ <b>124.1 377.05</b>	GND CON <b>239.05</b>	CLNC DEL <b>328.4</b>	ASR/PAR
-------------------------	--------------------------------	-------------------------------	--------------------------	--------------------------	---------



EMERG SAFE ALT 100 NM 16,200



ELEV	50	TDZE	48
------	----	------	----



CATEGORY	A	B	C	D
S-35R *	420-½	372 (400-½)	420-¾	372 (400-¾)
CIRCLING	540-1	490 (500-1)	760-2 710 (800-2)	760-2¼ 710 (800-2¼)

HIRL all rwy's  
 REIL all rwy's  
 TDZL/CL Rwy 17L

# TACAN Y RWY 35R

SC-3, 16 APR 2026 to 14 MAY 2026

SC-3, 16 APR 2026 to 14 MAY 2026