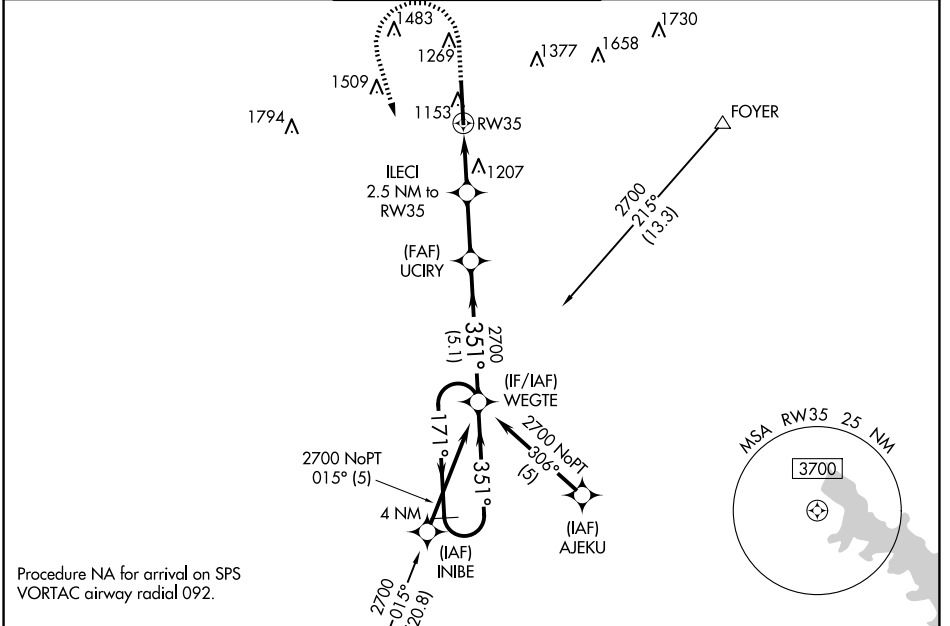


WAAS CH 77640 W35A	APP CRS 351°	Rwy Idg TDZE Apt Elev	8599 1089 1110
--	------------------------	-----------------------------	---

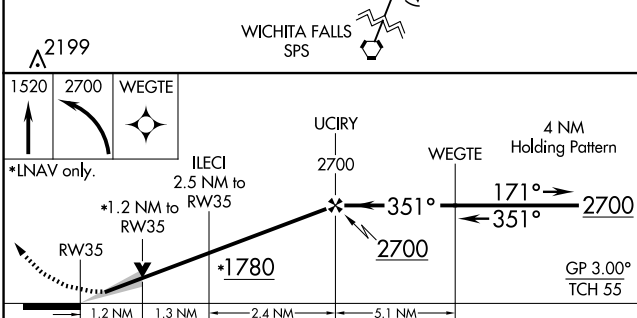
RNAV (GPS) RWY 35

LAWTON-FORT SILL RGNL (LAW)

RNP APCH.		LAWTON TOWER * 119.9 (CTAF) 0 257.8		GND CON 121.9	UNICOM 122.95
<p>▼ For uncompensated Baro-VNAV systems, LNAV/VNAV NA below -11°C or above 54°C. For inop ALS, increase LNAV/VNAV all ASR Cats visibility to 7/6 SM.</p>		<p>MALSR</p>		<p>MISSED APPROACH: (Do not exceed 200K until WEGTE) Climb to 1520 then climbing left turn to 2700 direct WEGTE and hold.</p>	



Procedure NA for arrival on SPS VORTAC airway radial 092.



ELEV 1110	D	TDZE 1089
-----------	---	-----------

CATEGORY	A	B	C	D
LPV DA		1289-1/2	200 (200-1/2)	
LNAV/VNAV DA		1376-1/2	287 (300-1/2)	
LNAV MDA	1520-1/2	431 (500-1/2)	1520-3/4	431 (500-3/4)
CIRCLING	1620-1	510 (600-1)	1820-2 710 (800-2)	1820-2 1/4 710 (800-2 1/4)

SC-1, 16 APR 2026 to 14 MAY 2026

SC-1, 16 APR 2026 to 14 MAY 2026