

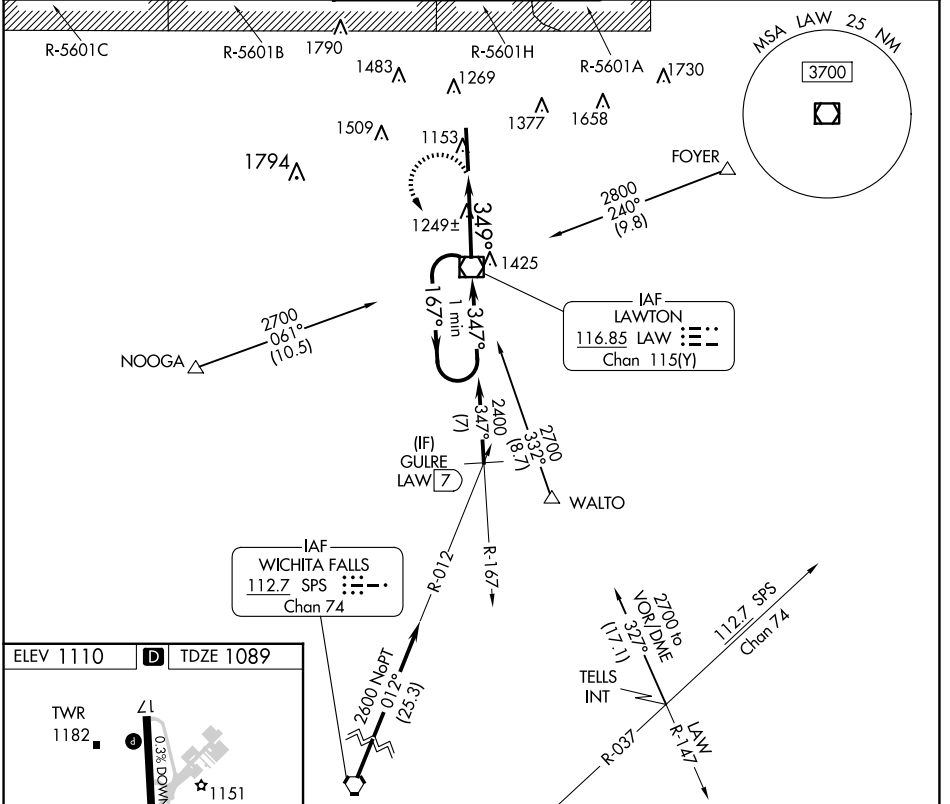
VOR/DME LAW <b>116.85</b> Chan <b>115(Y)</b>	APP CRS <b>349°</b>	Rwy Idg TDZE Apt Elev	<b>8599</b> <b>1089</b> <b>1110</b>
--	------------------------	-----------------------------	---

# VOR RWY 35

LAWTON-FORT SILL RGNL (LAW)

For inop ALS, increase Cat C/D visibility to 1½ SM. ASR	MALS 	MISSED APPROACH: Climbing left turn to 2800 direct LAW VOR/DME and hold, continue climb-in-hold to 2800.	

ATIS <b>120.75</b>	FORT SILL APP CON <b>120.55 322.4</b>	LAWTON TOWER ★ <b>119.9(CTAF) 257.8</b>	GND CON <b>121.9</b>	UNICOM <b>122.95</b>
-----------------------	--	--	-------------------------	-------------------------



ELEV 1110	<b>D</b>	TDZE 1089
-----------	----------	-----------

Knots	60	90	120	150	180
Min:Sec	3:30	2:20	1:45	1:24	1:10

CATEGORY	A	B	C	D
S-35	1500-½ 411 (500-½)		1500-¾ 411 (500-¾)	
CIRCLING	1620-1 510 (600-1)		1820-2 710 (800-2)	1820-2¼ 710 (800-2¼)

SC-1, 16 APR 2026 to 14 MAY 2026

SC-1, 16 APR 2026 to 14 MAY 2026