

WAAS CH 72919 W14A	APP CRS 145°	Rwy Idg TDZE Apt Elev	6306 2119 2143
----------------------------------------	------------------------	-----------------------------	-------------------------------------------

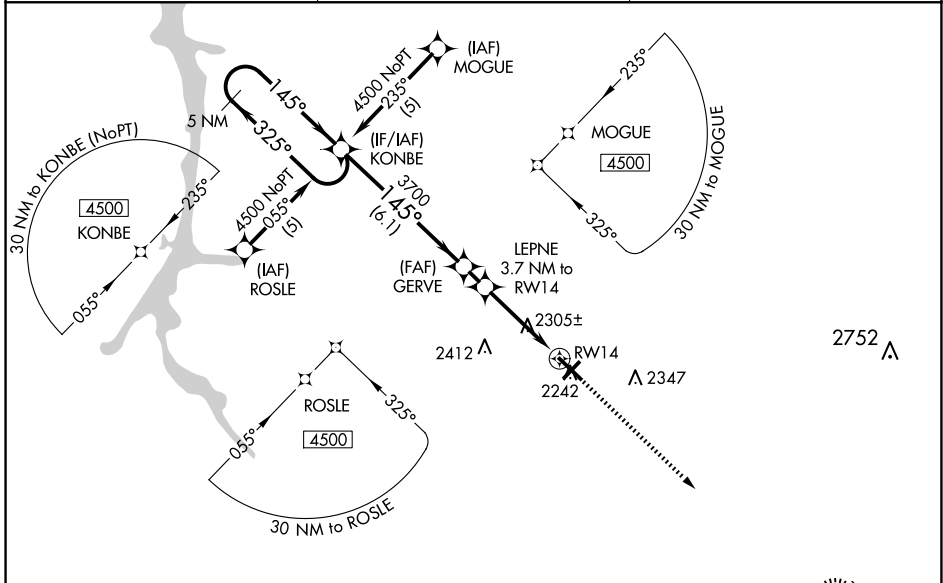
RNAV (GPS) RWY 14

BRADFORD RGNL (BFD)

⚠ For uncompensated Baro-VNAV systems, LNAV/VNAV NA below -19°C (-2°F) or above 53°C (129°F). Baro-VNAV and VDP NA when using St. Marys altimeter setting. DME/DME RNP-0.3 NA. Helicopter visibility reduction below 3/4 SM NA. When local altimeter setting not received, use St. Marys altimeter setting: increase LPV DA to 2454 feet and all visibilities 1/2 SM; increase LNAV/VNAV DA to 2602 feet and all visibilities 1/4 SM; increase all MDAs 100 feet and Circling Cat C visibility 1/2 SM, and LNAV Cats C and D and Circling Cat D 1/4 SM.

⚠ MISSED APPROACH: Climb to 4500 direct NIMEE and hold.

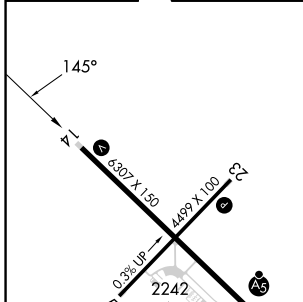
ASOS 133.825	CLEVELAND CENTER 124.325 353.85	UNICOM 123.075 (CTAF) 0
------------------------	-------------------------------------------	-----------------------------------



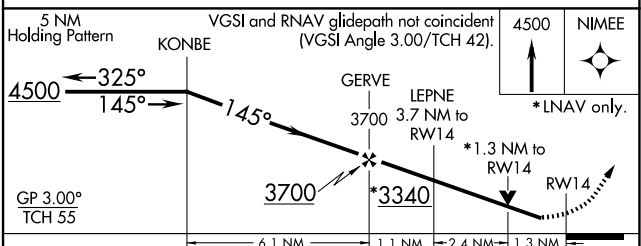
NE-4, 16 APR 2026 to 14 MAY 2026

NE-4, 16 APR 2026 to 14 MAY 2026

ELEV 2143	D	TDZE 2119
-----------	----------	-----------



MIRL Rwy 5-23 **0**
HIRL Rwy 14-32 **0**
REIL Rwy 5, 14 and 23 **0**



CATEGORY	A	B	C	D
LPV DA		2369-1	250 (300-1)	
LNAV/VNAV DA		2517-1 ³ / ₈	398 (400-1 ³ / ₈)	
LNAV MDA	2560-1	441 (500-1)	2560-1 ³ / ₈	441 (500-1 ³ / ₈)
CIRCLING	2620-1	477 (500-1)	2720-1 ¹ / ₂ 577 (600-1 ¹ / ₂)	2760-2 617 (700-2)