

VOR BIE 110.6	APP CRS 176°	Rwy Ldg TDZE Apt Elev	5602 1324 1324
-------------------------	------------------------	-----------------------------	---

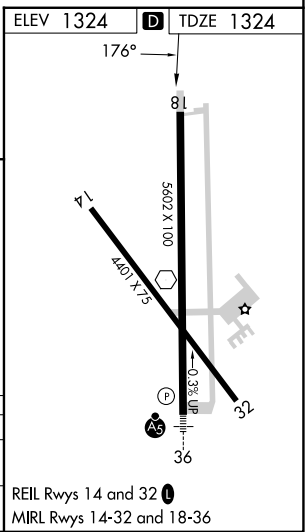
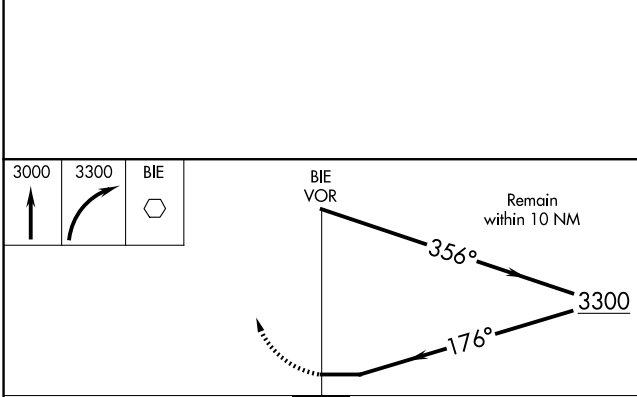
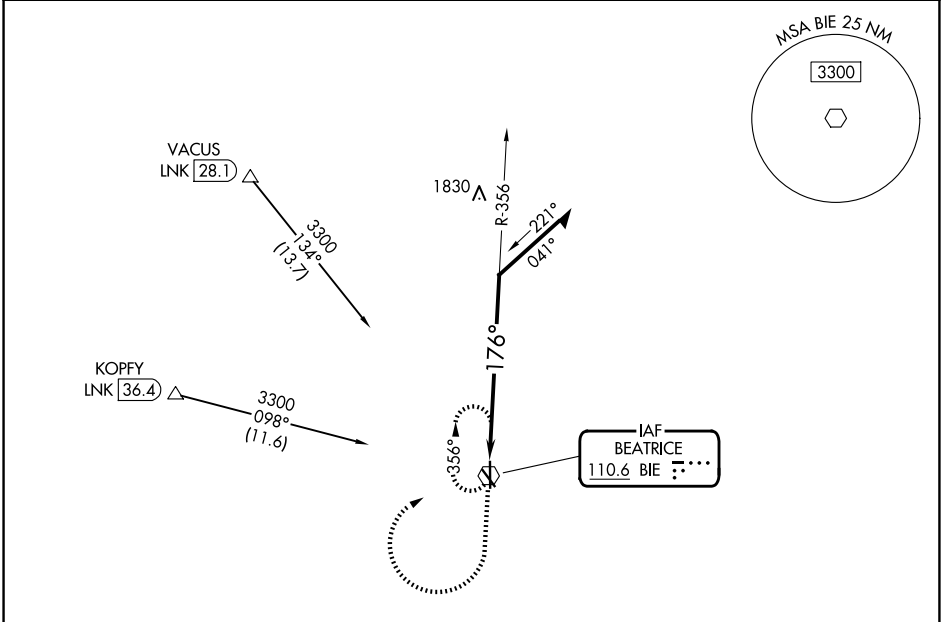
VOR RWY 18
BEATRICE MUNI (BIE)

DME required for procedure entry.

▽
▲ Rwy 18 helicopter visibility reduction below 3/4 SM NA.

MISSED APPROACH: Climb to 3000 then climbing right turn to 3300 direct BIE VOR and hold.

AWOS-3 125.325	MINNEAPOLIS CENTER 126.4 317.7	UNICOM 122.8 (CTAF)
--------------------------	--	-------------------------------



CATEGORY	A	B	C	D
S-18	2180-1 856 (900-1)	2180-1¼ 856 (900-1¼)	2180-2½	856 (900-2½)
CIRCLING	2180-1¼	856 (900-1¼)	2180-2½ 856 (900-2½)	2180-2¾ 856 (900-2¾)

NC-2, 16 APR 2026 to 14 MAY 2026

NC-2, 16 APR 2026 to 14 MAY 2026