


LOC I-TTN <b>111.3</b>	APP CRS <b>058°</b>	Rwy Ldg TDZE Apt Elev	<b>6006</b> <b>186</b> <b>213</b>
---------------------------	------------------------	-----------------------------	---

# ILS or LOC RWY 6

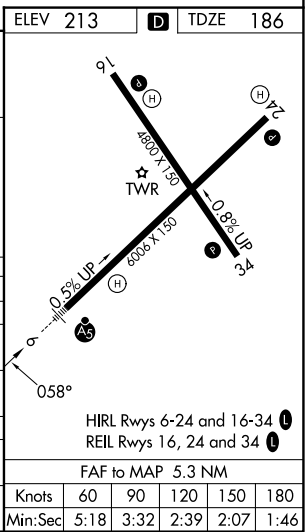
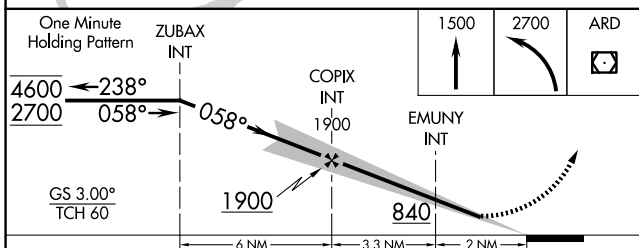
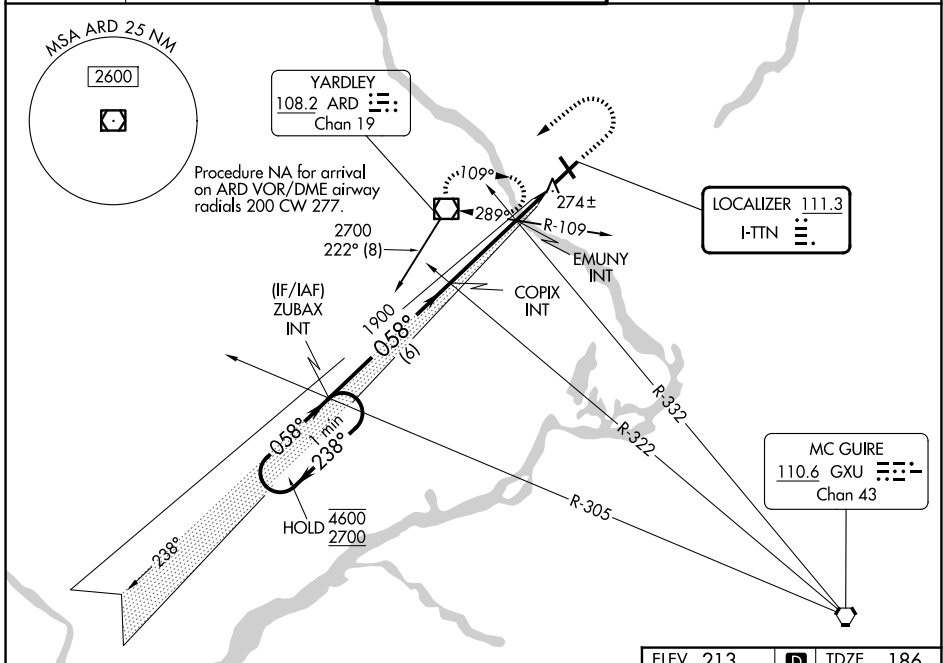
TRENTON MERCER (TTN)

**▼** When Circling to Rwy 34 at night, operational VGSI required, remain on or above VGSI glidepath until threshold. For inop ALS, increase EMUNY fix minimums S-LOC 6 Cat C/D visibility to 1 SM.

**▲** MALSR 

MISSED APPROACH: Climb to 1500 then climbing left turn to 2700 direct ARD VOR/DME and hold.

ATIS <b>126.775</b>	PHILADELPHIA APP CON <b>123.8 291.7</b>	TRENTON TOWER ★ <b>120.7 (CTAF) 0 257.8</b>	GND CON <b>121.9 257.8</b>	UNICOM <b>122.95</b>
------------------------	--	--	-------------------------------	-------------------------



CATEGORY	A	B	C	D
S-ILS 6	414-½ 228 (300-½)			
S-LOC 6	840-½	654 (700-½)	840-1⅓	654 (700-1⅓)
CIRCLING	840-1	627 (700-1)	840-1⅞	960-2½ 627 (700-1⅞) 747 (800-2½)
EMUNY FIX MINIMUMS (DUAL VOR RECEIVERS REQUIRED)				
S-LOC 6	540-½	354 (400-½)	540-⅝	354 (400-⅝)
CIRCLING	680-1	467 (500-1)	760-1½	960-2½ 547 (600-1½) 747 (800-2½)

NE-2, 16 APR 2026 to 14 MAY 2026

NE-2, 16 APR 2026 to 14 MAY 2026