

WAAS CH 99330 W16A	APP CRS 158°	Rwy Ldg TDZE Apt Elev	4800 213 213
--	------------------------	-----------------------------	---

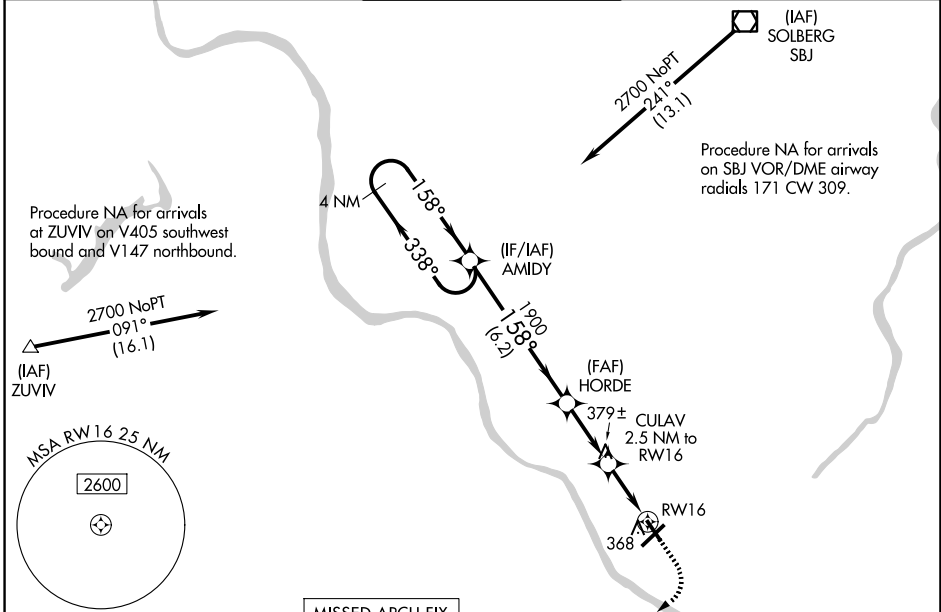
RNAV (GPS) RWY 16

TRENTON MERCER (TTN)

▼ Night Landing: Rwy 34 operational VGSI required, remain on or above VGSI glidepath until threshold.
 Baro-VNAV NA when using Northeast Philadelphia altimeter setting. For uncompensated Baro-VNAV systems, LNAV/VNAV NA below -15°C (5°F) or above 54°C (130°F). DME/DME RNP-0.3 NA.
 ▲ Helicopter visibility reduction below 3/4 SM NA. When local altimeter setting not received use Northeast Philadelphia altimeter setting; increase LPV DA to 510 feet and all Cats visibility 1/8 SM, LNAV/VNAV DA to 576 feet; increase all MDA 60 feet and LNAV Cat C/D visibility 1/8 SM and Circling Cat C visibility 1/2 SM.

MISSED APPROACH:
 Climb to 1500 then climbing right turn to 2700 direct ZUBAX and hold.

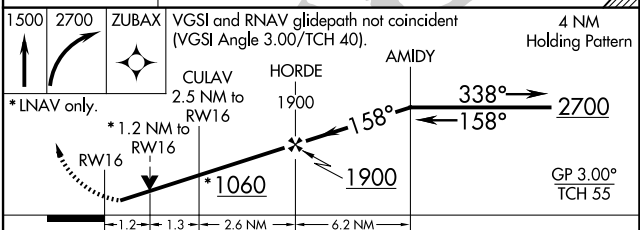
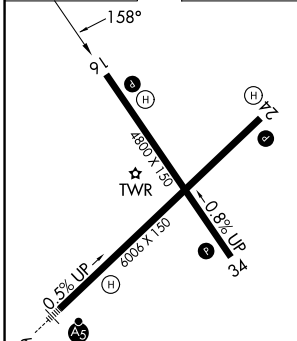
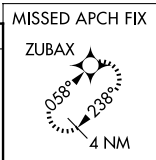
ATIS 126.775	PHILADELPHIA APP CON 123.8 291.7	TRENTON TOWER ★ 120.7 (CTAF) 0 257.8	GND CON 121.9 257.8	UNICOM 122.95
------------------------	--	--	-------------------------------	-------------------------



NE-2, 16 APR 2026 to 14 MAY 2026

NE-2, 16 APR 2026 to 14 MAY 2026

ELEV 213	D	TDZE 213
-----------------	----------	-----------------



CATEGORY	A	B	C	D
LPV DA	463-3/4 250 (300-3/4)			
LNAV/VNAV DA	529-1 316 (400-1)			
LNAV MDA	640-1	427 (500-1)	640-1/4	427 (500-1/4)
CIRCLING	680-1	467 (500-1)	547 (600-1/2)	747 (800-2/2)

HIRL Rwy 6-24 and 16-34
 REIL Rwy 16, 24 and 34