

APP CRS 239°	Rwy Ldg TDZE Apt Elev	6006 193 212
------------------------	-----------------------------	---

RNAV (RNP) Y RWY 24

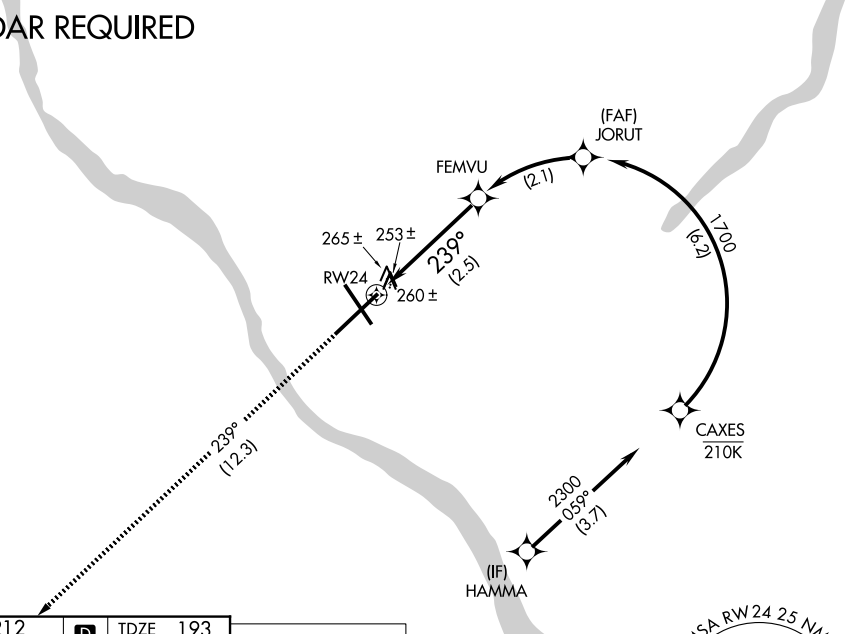
TRENTON MERCER (TTN)

▼ For uncompensated Baro-VNAV systems, procedure NA below -13°C (8°F) or above 54°C (130°F).
When VGSI inop, procedure NA at night.
RF required.
GPS required.

MISSED APPROACH: Climb to 2700 on track 239° to ZUBAX and hold.

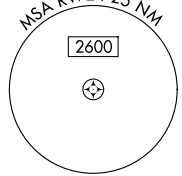
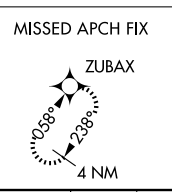
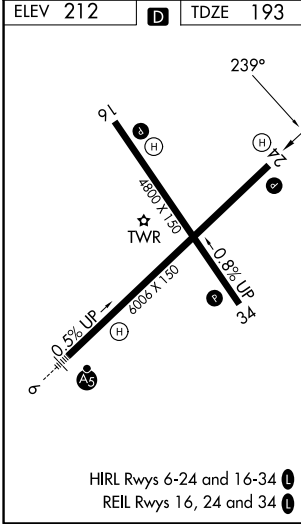
ATIS 126.775	PHILADELPHIA APP CON 123.8 291.7	TRENTON TOWER ★ 120.7 (CTAF) 0 257.8	GND CON 121.9 257.8	UNICOM 122.95
------------------------	--	--	-------------------------------	-------------------------

RADAR REQUIRED



NE-2, 16 APR 2026 to 14 MAY 2026

NE-2, 16 APR 2026 to 14 MAY 2026



2700	ZUBAX	VGSIs and RNAV glidepath not coincident (VGSI Angle 3.00/TCH 42).			
↑ tr 239°	JORUT	CAXES	HAMMA		
	FEMVU	1700	059°	2600	
	RWY 24	1043	2300		GP 3.00° TCH 55
		1700			
		2.5 NM	2.1 NM	6.2 NM	3.7 NM

CATEGORY	A	B	C	D
RNP 0.10 DA		641-1½	448 (500-1½)	
RNP 0.30 DA		741-1½	548 (600-1½)	

AUTHORIZATION REQUIRED