

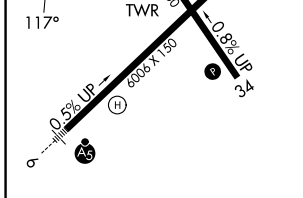
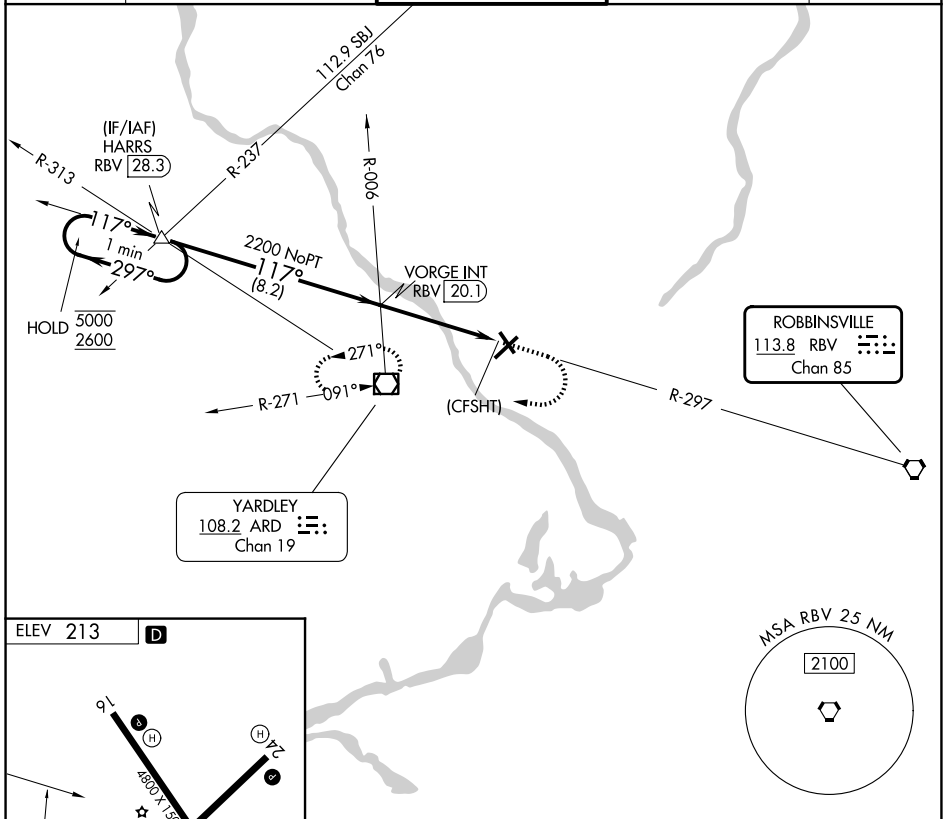
VORTAC RBV <b>113.8</b> Chan <b>85</b>	APP CRS <b>117°</b>	Rwy Ldg TDZE Apt Elev <b>N/A</b> <b>N/A</b> <b>213</b>
----------------------------------------------	------------------------	--------------------------------------------------------------------

**VOR-A**  
TRENTON MERCER (TTN)

▼ Rwy 34 helicopter visibility reduction below 1 SM NA. When Circling to Rwy 34 at night, operational VGSI required, remain at or above VGSI glidepath until threshold. When local altimeter setting not received, use PNE altimeter setting and increase all MDAs 60 feet and visibility Cat C/D ¼ SM.

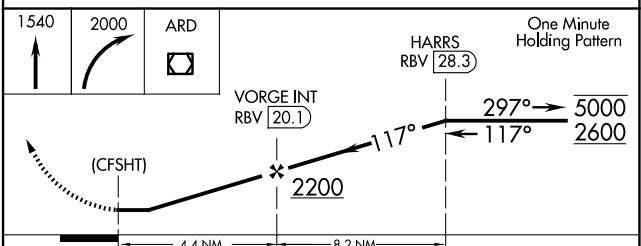
MISSED APPROACH: Climb to 1540 then climbing right turn to 2000 direct ARD VOR/DME and hold.

ATIS <b>126.775</b>	PHILADELPHIA APP CON <b>123.8 291.7</b>	TRENTON TOWER ★ <b>120.7 (CTAF) 0 257.8</b>	GND CON <b>121.9 257.8</b>	UNICOM <b>122.95</b>
------------------------	--------------------------------------------	------------------------------------------------	-------------------------------	-------------------------



HIRL Rwy 6-24 and 16-34  
REIL Rwy 16, 24 and 34

FAF to MAP 4.4 NM					
Knots	60	90	120	150	180
Min:Sec	4:24	2:56	2:12	1:46	1:28



CATEGORY	A	B	C	D
CIRCLING	940-1	727 (800-1)	940-2 727 (800-2)	980-2½ 767 (800-2½)

NE-2, 16 APR 2026 to 14 MAY 2026

NE-2, 16 APR 2026 to 14 MAY 2026