

# RNAV (GPS) RWY 25

WAAS CH <b>83310</b> <b>W25A</b>	APCH CRS <b>252°</b>	Rwy Idg TDZE <b>449</b> Arprt Elev <b>449</b>	<b>8575</b>
--	-------------------------	---	-------------

[USA]

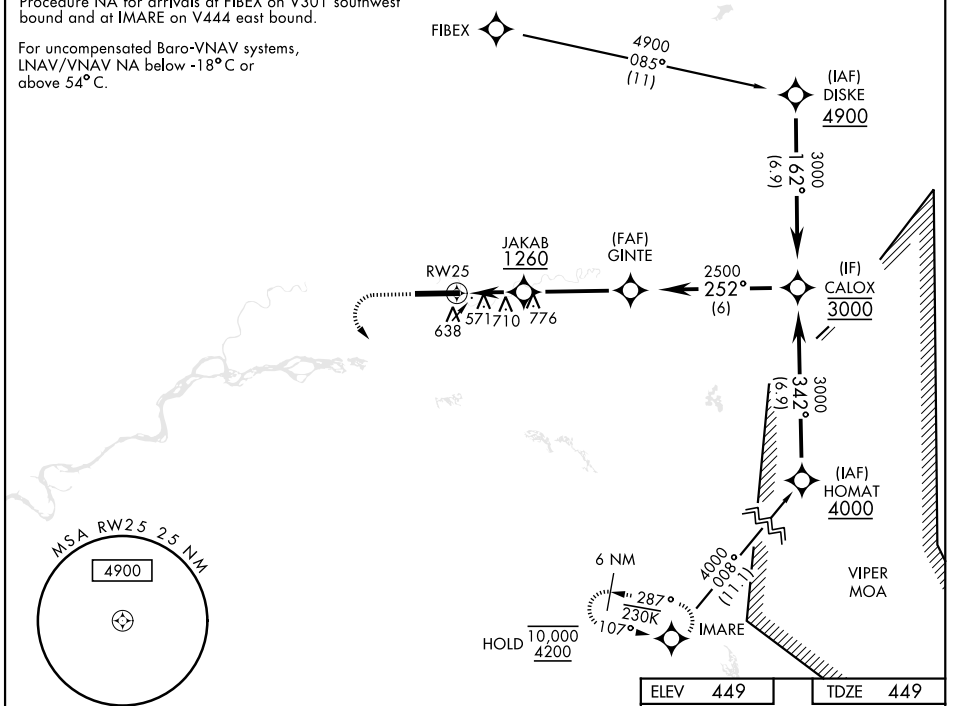
LADD AAF (PAFB)

RNP APCH-GPS	ALSIF-1 	MISSED APPROACH: Climb to 1000 then climbing left turn to 4200 direct IMARE and hold.
<p>▼ * When ALS inop, increase vis to 1½ miles.                  ** When ALS inop, increase CAT CD vis to 1½ miles.                  *** Circling not authorized N of Rwy 7-25.</p>		

ATIS <b>134.25</b>	FAIRBANKS APP CON <b>127.1 251.1</b> 360° - 179° <b>125.35 363.2</b> 180° - 359°	TOWER★ <b>125.0</b> (CTAF) <b>0 284.6</b>	GND CON <b>121.7 263.15</b>	ASR/PAR
-----------------------	--	--	--------------------------------	---------

Procedure NA for arrivals at FIBEX on V301 southwest bound and at IMARE on V444 east bound.

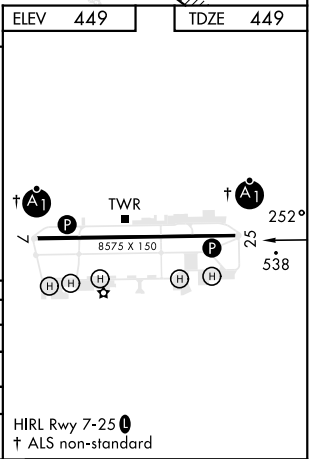
For uncompensated Baro-VNAV systems, LNAV/VNAV NA below -18°C or above 54°C.



AK, 19 MAR 2026 to 14 MAY 2026

AK, 19 MAR 2026 to 14 MAY 2026

ELEV 449	TDZE 449				
<table border="1"> <tr> <td>1000</td> <td>4200</td> <td>IMARE</td> </tr> </table>	1000	4200	IMARE	<p>VGSI and descent angles not coincident (VGSI angle 3.30/TCH 67).</p>	<p>↑ CALOX 3000</p>
1000	4200	IMARE			
<p>GINTE 2500</p> <p>JAKAB 1260</p> <p>1.38 NM to RW25</p> <p>3.00° TCH 60</p> <p>2.4 NM      3.9 NM</p>					
CATEGORY	A	B	C	D	
LPV DA	649-1 200 (200-1)				
LNAV/VNAV DA*	853-1 404 (500-1)				
LNAV MDA**	1000-1 551 (600-1)	1000-1½ 551 (600-1½)			
CIRCLING***	1000-1 551 (600-1)	1040-1 591 (600-1)	1080-1¾ 631 (700-1¾)	1160-2¼ 711 (800-2¼)	
<p>FAIRBANKS/FORT WAINWRIGHT, ALASKA      64°50'N-147°37'W</p> <p>Amdt 7 27NOV25</p>					



# RNAV (GPS) RWY 25