

COPTER RNAV (GPS) RWY 18

APCH CRS	Rwy Idg	2005
178°	TDZE	1091
	Arpt Elev	1091

[USA]

MULDROW AHP (KHMY)

RNP APCH - GFS

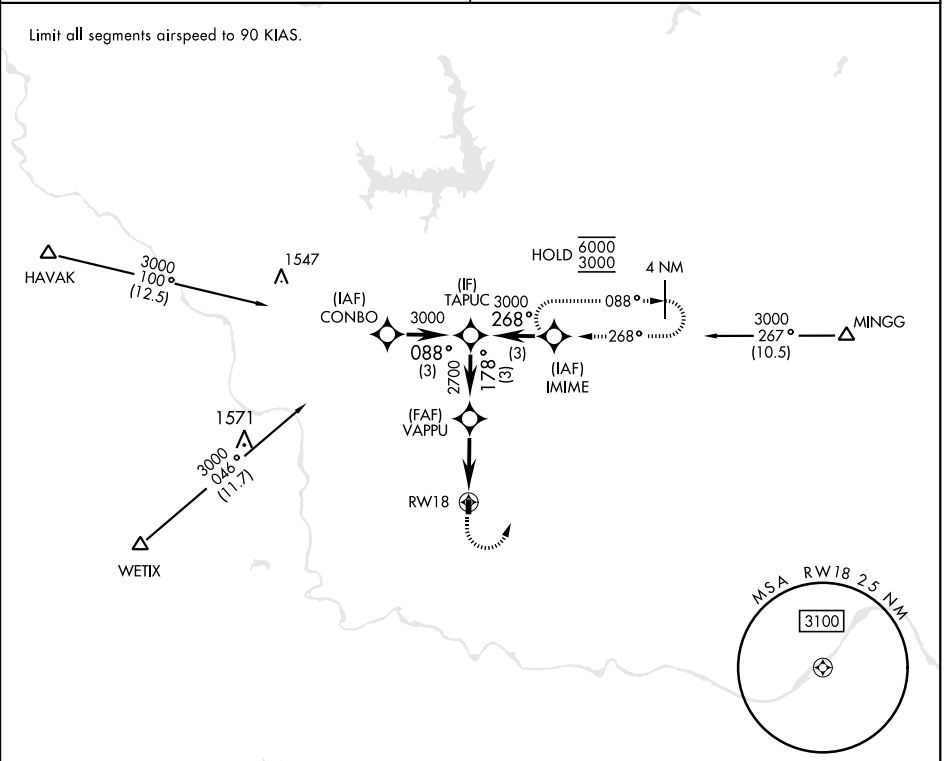
▼ Obtain local altimeter setting on CTAF; when not received, use University of Oklahoma Westheimer altimeter setting minimums.
 ▲ NA

MISSED APPROACH: Climbing left turn to 3000 direct IMIME and hold.

OKE CITY APP CON
124.2 336.4

MULDROW OPS (Advisory service only)
46.9 139.425 227.2 (CTAF)

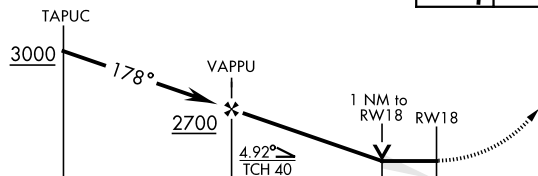
Limit all segments airspeed to 90 KIAS.



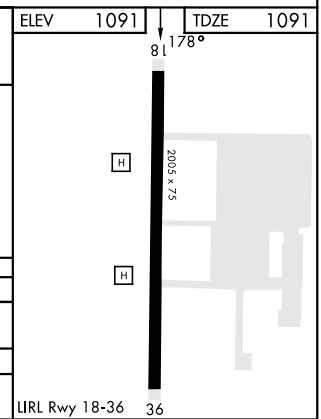
SC-1, 16 APR 2026 to 14 MAY 2026

SC-1, 16 APR 2026 to 14 MAY 2026

3000	IMIME	ELEV	1091	TDZE	1091
------	-------	------	------	------	------



CATEGORY	COPTER	
LNAV MDA	1660-1	569 (600-1)
UNIVERSITY OF OKLAHOMA WESTHEIMER ALTIMETER SETTING MINIMUMS		
LNAV MDA	1720-1	629 (700-1)



COPTER RNAV (GPS) RWY 18