

NORTH, SOUTH CAROLINA

RNAV (GPS) RWY 24

APCH CRS	Rwy Idg	8999
241°	TDZE	316
	Arprt Elev	321

(USAF)

NORTH AF AUX (KXNO)

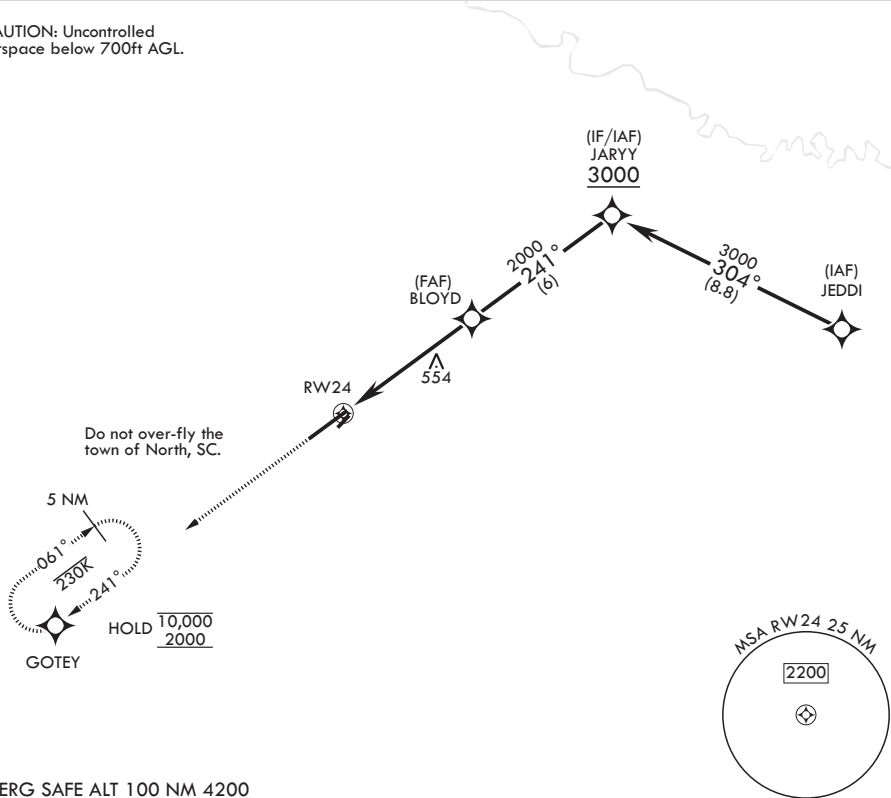
RNP APCH

MISSED APPROACH: Climb to 2000 direct GOTEY and hold, continue climb-in-hold to 2000.

* Circling NA to Assault Strip.

ASOS 118.525	COLUMBIA APP CON/DEP CON 124.15 338.2	LZ/DZ OPS FAC 120.475 235.775
-----------------	--	----------------------------------

CAUTION: Uncontrolled airspace below 700ft AGL.



EMERG SAFE ALT 100 NM 4200

2000	GOTEY	ELEV 321	TDZE 316		
CATEGORY	A	B	C	D	E
LNAV MDA	880-1	564 (600-1)	880-1 $\frac{3}{4}$	564 (600-1 $\frac{3}{4}$)	
CIRCLING*	940-1	619 (700-1)	940-1 $\frac{3}{4}$	619 (700-1 $\frac{3}{4}$)	1400-3 1079 (1100-3)

HIRL Rwy 6-24

NORTH, SOUTH CAROLINA

33°37'N - 81°05'W

NORTH AF AUX (KXNO)

Amdt 3 29DEC22

RNAV (GPS) RWY 24

SE-2, 16 APR 2026 to 14 MAY 2026

SE-2, 16 APR 2026 to 14 MAY 2026