

NORTH, SOUTH CAROLINA

RNAV (GPS) RWY 6

APCH CRS 061°	Rwy Idg 9003
	TDZE 281
	Arprt Elev 321

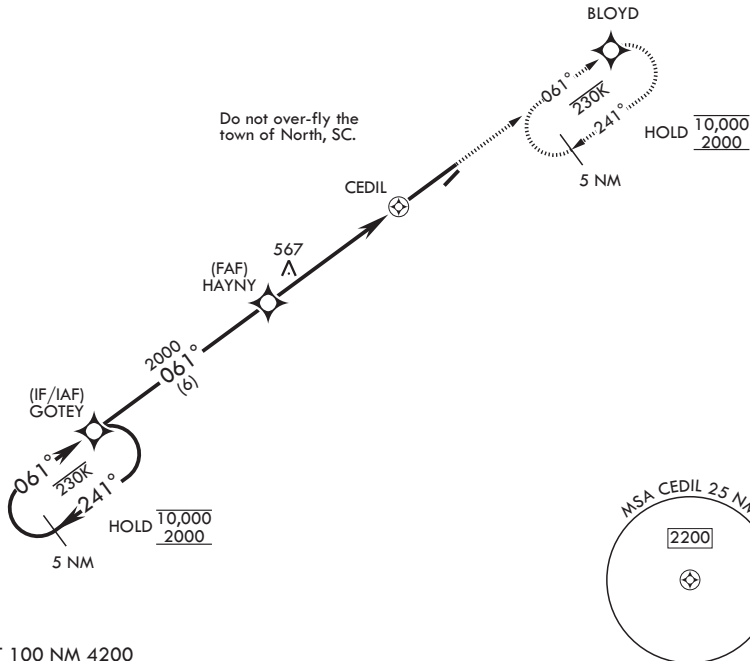
(USAF)

NORTH AF AUX (KXNO)

RNP APCH.	MISSED APPROACH: Climb to 2000 direct BLOYD and hold.
-----------	---

ASOS 118.525	COLUMBIA APP CON/DEP CON 124.15 338.2	LZ/DZ OPS FAC 120.475 235.775
------------------------	---	---

CAUTION: Uncontrolled airspace below 700 ft AGL.



EMERG SAFE ALT 100 NM 4200

<p>5 NM Holding Pattern</p>		<p>2000 BLOYD</p>	ELEV 321	See Supp for declared dist.	TDZE 281
<p>10,000 2000</p>					
CATEGORY	A	B	C	D	E
LNAV MDA	880-1	599 (600-1)	880-1 ³ / ₄	599 (600-1 ³ / ₄)	
CIRCLING*	940-1	619 (700-1)	940-1 ³ / ₄ 619 (700-1 ³ / ₄)	1400-3	1079 (1100-3)

NORTH, SOUTH CAROLINA
Amdt 3 29DEC22

33°37'N - 81°05'W

NORTH AF AUX (KXNO)

RNAV (GPS) RWY 6

SE-2, 16 APR 2026 to 14 MAY 2026

SE-2, 16 APR 2026 to 14 MAY 2026