

VOR FKL <b>109.6</b>	APP CRS <b>187°</b>	Rwy ldg TDZE <b>1540</b> Apt Elev <b>1540</b>
-------------------------	------------------------	---

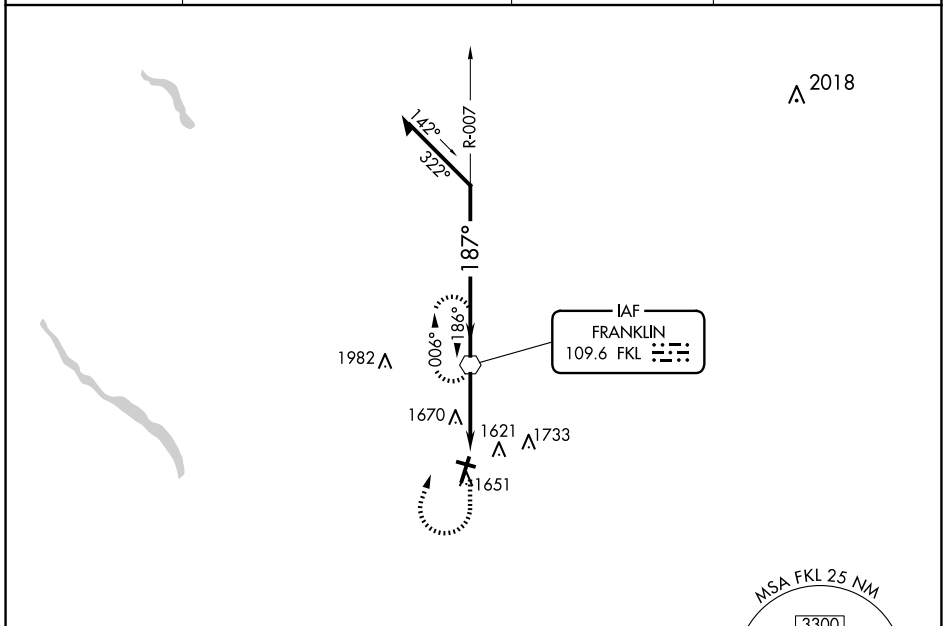
**VOR RWY 21**  
VENANGO RGNL (F'KL)

**⚠** Inop table does not apply. When local altimeter setting not received, use Port Meadville altimeter setting and increase all MDA 80 feet and S-21 Cats C/D visibility 3/8 mile. Circling Rwy 12 NA at night. Rwy 12 helicopter visibility reduction below 1 SM NA.

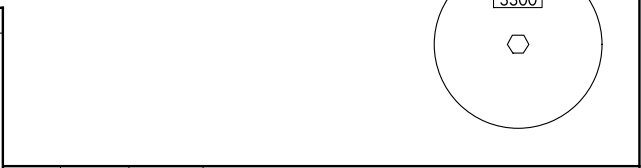
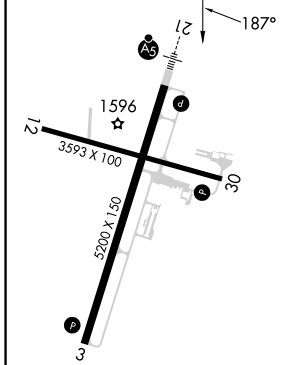
**MALSR**  
**A5**

**MISSED APPROACH:** Climb to 2200, then climbing right turn to 3300 direct FKL VOR and hold.

AWOS-3PT <b>118.175</b>	YOUNGSTOWN APP CON ★ <b>126.25 322.3</b>	CLNC DEL <b>126.25</b>	UNICOM <b>122.7</b> (CTAF) <b>⓪</b>
----------------------------	---	---------------------------	--



ELEV 1540	<b>D</b>	TDZE 1540
-----------	----------	-----------



2200	3300	FKL	FKL VOR	Remain within 10 NM
↑	↷	⬡	007°	3200
			187°	2700
			3.13°	TCH 57
			3.3 NM	

MIRL Rwy 12-30 <b>⓪</b> HIRL Rwy 3-21 <b>⓪</b>	FAF to MAP 3.3 NM	CATEGORY	A	B	C	D
Knots	60 90 120 150 180	S-21	1920-1 380 (400-1)			
Min:Sec	3:18 2:12 1:39 1:19 1:06	CIRCLING	1960-1 420 (500-1)	2000-1 460 (500-1)	2040-1½ 500 (500-1½)	2100-2 560 (600-2)

NE-4, 16 APR 2026 to 14 MAY 2026

NE-4, 16 APR 2026 to 14 MAY 2026