

LOC I-STX 109.5	APP CRS 097°	Rwy ldg 10002 TDZE 74 Apt Elev 74
---------------------------	------------------------	--

ILS or LOC RWY 10

HENRY E ROHLSEN (STX)(TISX)

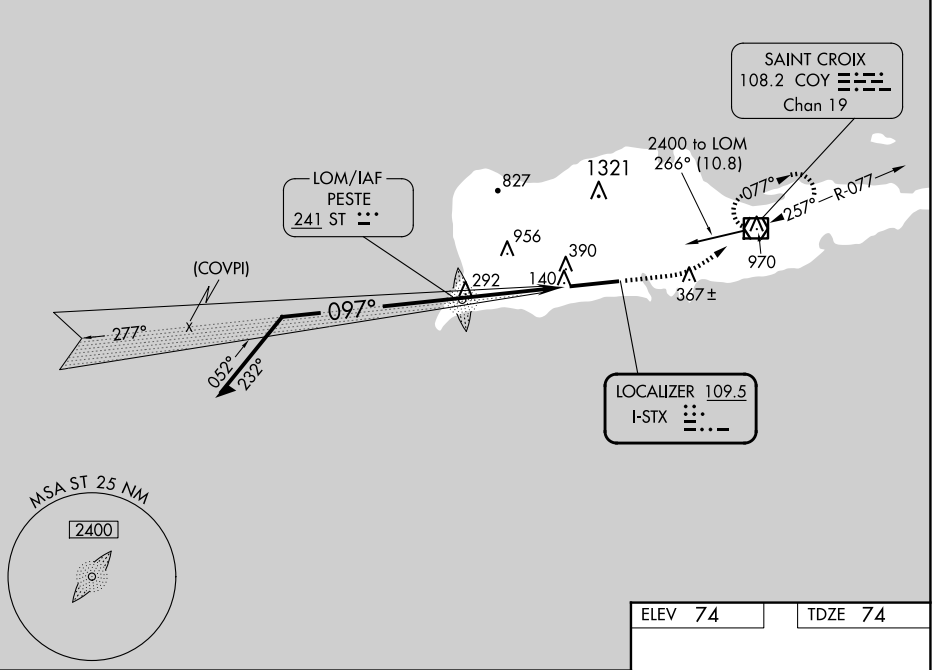
⚠ Circling NA N of Rwy 10-28. If local altimeter setting not received, procedure NA. For inoperative MALSRS, increase S-ILS 10 all Cats visibility to 1.

MALSRS

MISSED APPROACH: Climb to 700 then climbing left turn to 2400 direct COY VOR/DME and hold, continue climb-in-hold to 2400.

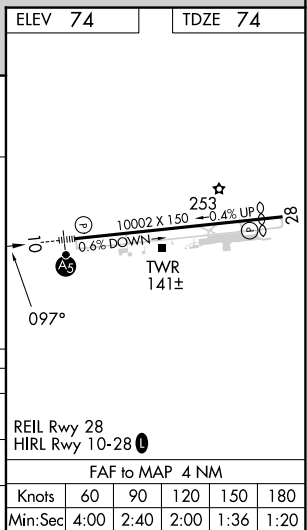
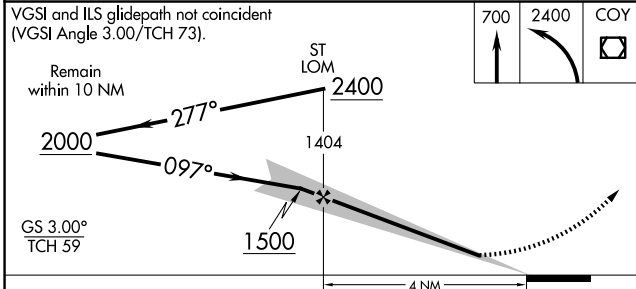
ATIS 135.65	SAN JUAN CENTER 128.65 279.6	ST. CROIX TOWER ★ 118.6 (CTAF) 239.3	GND CON 121.7	UNICOM 123.0
-----------------------	--	--	-------------------------	------------------------

ADF REQUIRED



SE-3, 16 APR 2026 to 14 MAY 2026

SE-3, 16 APR 2026 to 14 MAY 2026



CATEGORY	A	B	C	D
S-ILS 10	375-½ 301 (400-½)			
S-LOC 10	480-½	406 (500-½)	480-¾	406 (500-¾)
CIRCLING	520-1 446 (500-1)	600-1 526 (600-1)	720-1¾ 646 (700-1¾)	720-2 646 (700-2)

REIL Rwy 28 HIRL Rwy 10-28	Knots	60	90	120	150	180
FAF to MAP 4 NM	Min:Sec	4:00	2:40	2:00	1:36	1:20