

LOC/DME I-PWK 109.75 Chan 34 (Y)	APP CRS 161°	Rwy Ldg TDZE Apt Elev 5001 643 647
--	------------------------	--

ILS or LOC RWY 16

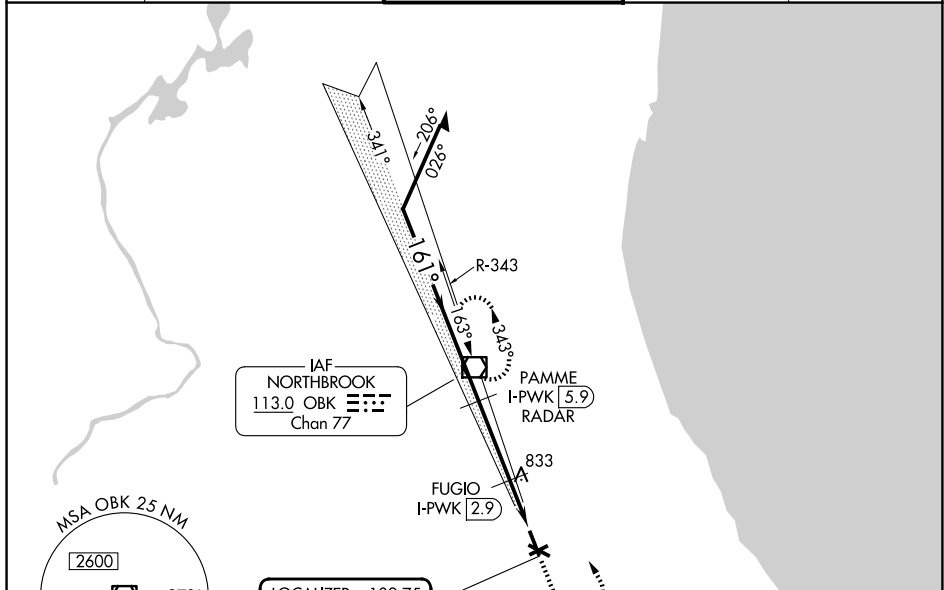
CHICAGO EXEC (PWK)

DME required.

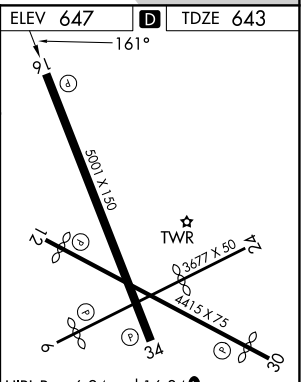
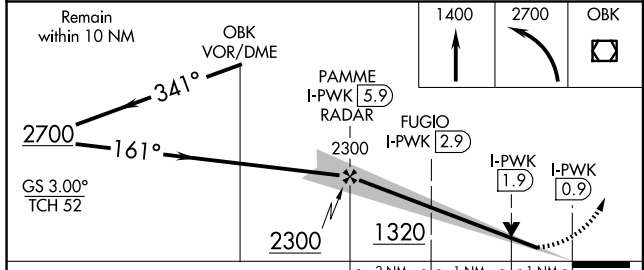
⚠ Circling Rwy 6, 12, 24, 30 NA at night.
Rwy 16 helicopter visibility reduction below 3/4 SM NA.

MISSED APPROACH: Climb to 1400 then climbing left turn to 2700 direct OBK VOR/DME and hold, continue climb-in-hold to 2700.

ATIS 124.2	CHICAGO APP CON 120.55 306.925	EXECUTIVE TOWER ★ 119.9 (CTAF) 0	GND CON 121.7	UNICOM 122.95
----------------------	--	---	-------------------------	-------------------------



MSA OBK 25 NM 2600 3400 270° 360°	LOCALIZER 109.75 I-PWK Chan 34(Y)
---	---



CATEGORY	A	B	C	D
S-ILS 16		927-7/8	284 (300-7/8)	
S-LOC 16		1020-1	377 (400-1)	
CIRCLING	1140-1 493 (500-1)	1160-1 513 (600-1)	1200-1 1/2 553 (600-2)	1460-2 3/4 813 (900-2 3/4)

HIRL Rwy 6-24 and 16-34 **0**
MIRL Rwy 12-30 **0**
REIL Rwys 12 and 30
REIL Rwys 16 and 34 **0**
RLS Rwy 16 **0**

FAF to MAP 5 NM

Knots	60	90	120	150	180
Min:Sec	5:00	3:20	2:30	2:00	1:40

EC-3, 16 APR 2026 to 14 MAY 2026

EC-3, 16 APR 2026 to 14 MAY 2026