

APP CRS	Rwy Ldg	<b>3725</b>
<b>300°</b>	TDZE	<b>644</b>
	Apt Elev	<b>647</b>

# RNAV (GPS) RWY 30

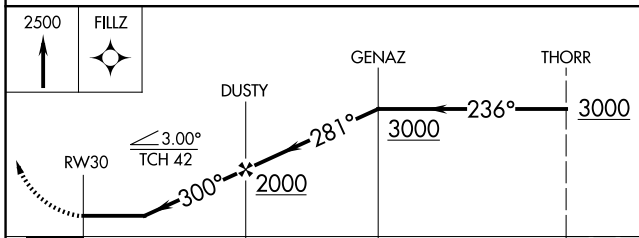
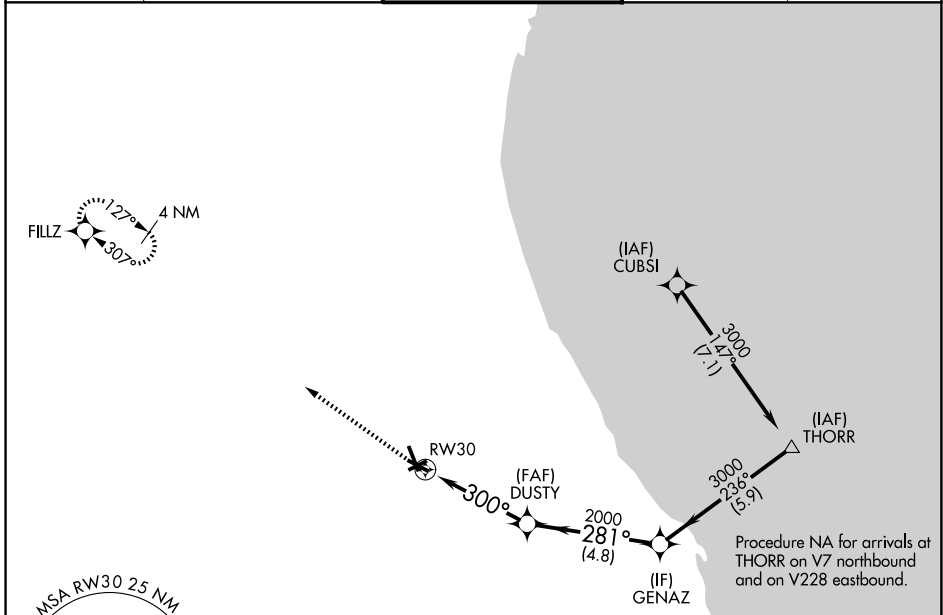
CHICAGO EXEC (PWK)

RNP APCH - GPS.

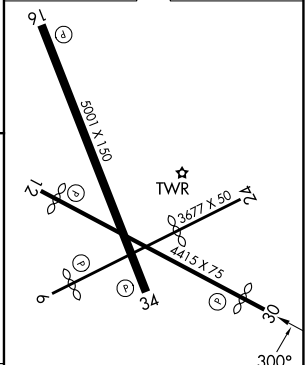
**▼** Rwy 30 helicopter visibility reduction below 1 SM NA. Straight-in Rwy 30 NA at night,  
**▲** Circling Rwy 6, 12, 24, 30 NA at night.

MISSED APPROACH: Climb to 2500 direct FILLZ and hold.

ATIS <b>124.2</b>	CHICAGO APP CON <b>120.55 306.925</b>	EXECUTIVE TOWER ★ <b>119.9 (CTAF) ①</b>	GND CON <b>121.7</b>	UNICOM <b>122.95</b>
----------------------	--	--	-------------------------	-------------------------



ELEV 647	<b>D</b> TDZE 644
----------	-------------------



CATEGORY	A	B	C	D
LNNAV MDA	1120-1	476 (500-1)	1120-1 <sup>3</sup> / <sub>8</sub>	476 (500-1 <sup>3</sup> / <sub>8</sub> )
CIRCLING	1140-1 493 (500-1)	1160-1 513 (600-1)	1200-1 <sup>1</sup> / <sub>2</sub> 553 (600-1 <sup>1</sup> / <sub>2</sub> )	1460-2 <sup>3</sup> / <sub>4</sub> 813 (900-2 <sup>3</sup> / <sub>4</sub> )

- HIRL Rwy 6-24 and 16-34 ①
- MIRL Rwy 12-30 ①
- REIL Rwys 12 and 30
- REIL Rwys 16 and 34 ①
- RLS Rwy 16 ①

EC-3, 16 APR 2026 to 14 MAY 2026

EC-3, 16 APR 2026 to 14 MAY 2026