

COPTER NDB RWY 34

YOKUM DEFRENN AHP (KHLR)

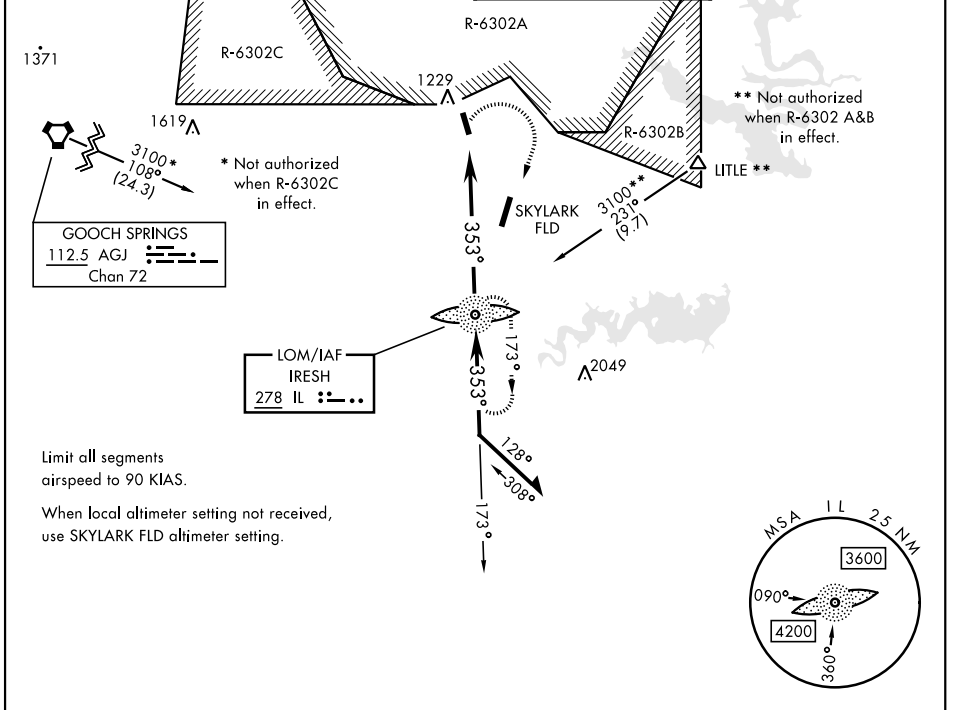
LOM IL 278	APCH CRS 353°	Rwy Idg TDZE Arprt Elev 2676 910 910
----------------------	-------------------------	--

[USA]

RADAR required

MISSED APPROACH: Climbing right turn to 3100 direct IL LOM and hold.

▲ NA	ATIS★ 138.6	GRAY APP CON 120.075 323.15	TOWER★ 119.65 269.45	GND CON 133.85 225.4
-------------	-----------------------	---------------------------------------	--------------------------------	--------------------------------

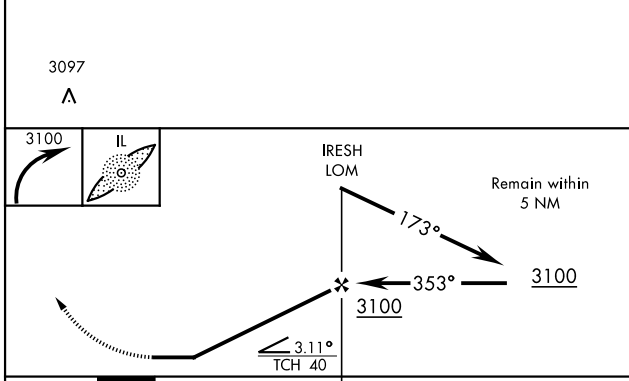
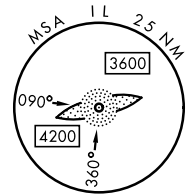


GOOCH SPRINGS
112.5 AGJ --- ---
Chan 72

LOM/IAF
IRESH
278 IL --- ..

Limit all segments
airspeed to 90 KIAS.

When local altimeter setting not received,
use SKYLARK FLD altimeter setting.



ELEV	910	TDZE	910			
★ 980		⊕				
		TWR 979				
		91				
		2.676 x 7.5				
		34				
		353°				
MIRL Rwy 16-34						
	FAF to MAP 6.6 NM					
CATEGORY	COPTER					
S-34	1400-1	490	(500-1)			
CIRCLING	1540-1	630	(700-1)			
	Knots	45	60	75	90	105
	Min:Sec	8:48	6:36	5:17	4:24	3:46

COPTER NDB RWY 34

SC-3, 16 APR 2026 to 14 MAY 2026

SC-3, 16 APR 2026 to 14 MAY 2026