

# COPTER VOR 032°

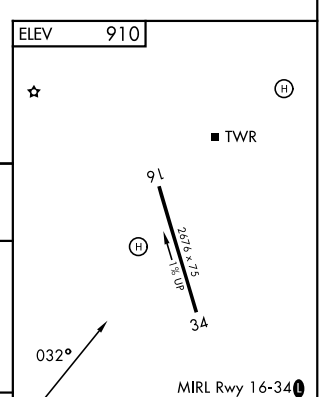
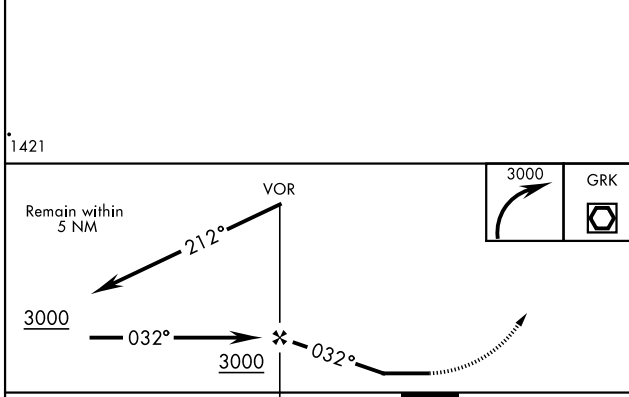
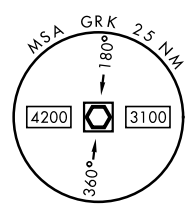
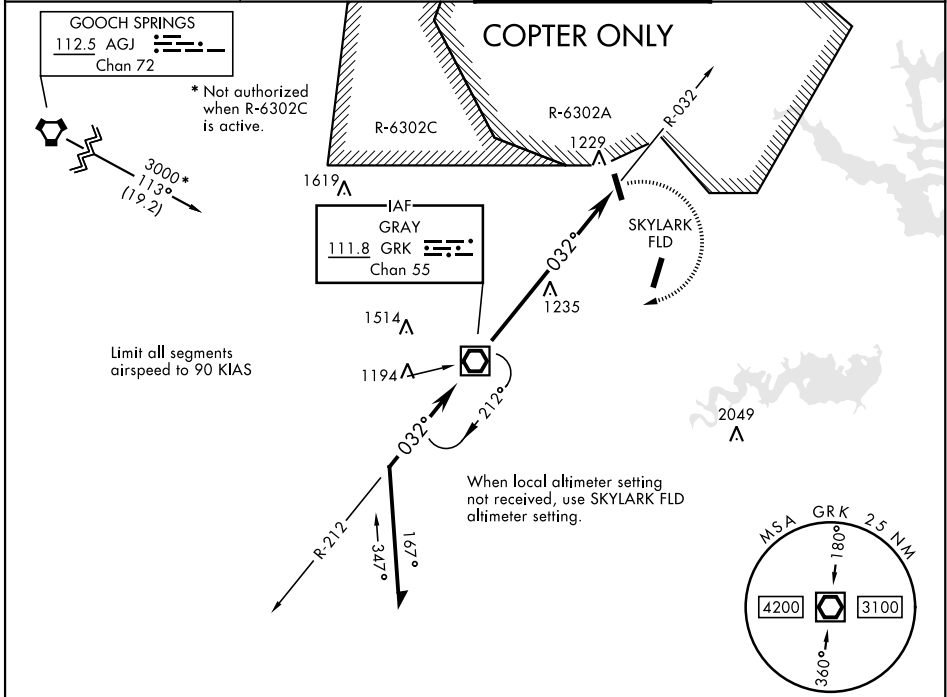
VOR/DME GRK <b>111.8</b> Chan <b>55</b>	APCH CRS <b>032°</b>	Rwy Idg TDZE N/A Arprt Elev <b>910</b>
---	-------------------------	---

[USA]

YOAKUM DEFRENN AHP (KHLR)

RADAR required	MISSED APPROACH: Climbing right turn to 3000 direct to GRK VOR/DME and hold.
----------------	--

ATIS★ <b>138.6</b>	GRAY APP CON <b>120.075 323.15</b>	TOWER★ <b>119.65 269.45</b>	GND CON <b>133.85 225.4</b>
-----------------------	---------------------------------------	--------------------------------	--------------------------------



CATEGORY	COPTER			FAF to MAP 8.0 NM						
	H-032°	1600-1	690	(700-1)	Knots	45	60	75	90	105
					Min:Sec	10:40	8:00	6:24	5:20	4:34

# COPTER VOR 032°

SC-3, 16 APR 2026 to 14 MAY 2026

SC-3, 16 APR 2026 to 14 MAY 2026