

APP CRS	Rwy Ldg	7510
312°	TDZE	43
	Apt Elev	46

RNAV (RNP) Z RWY 31

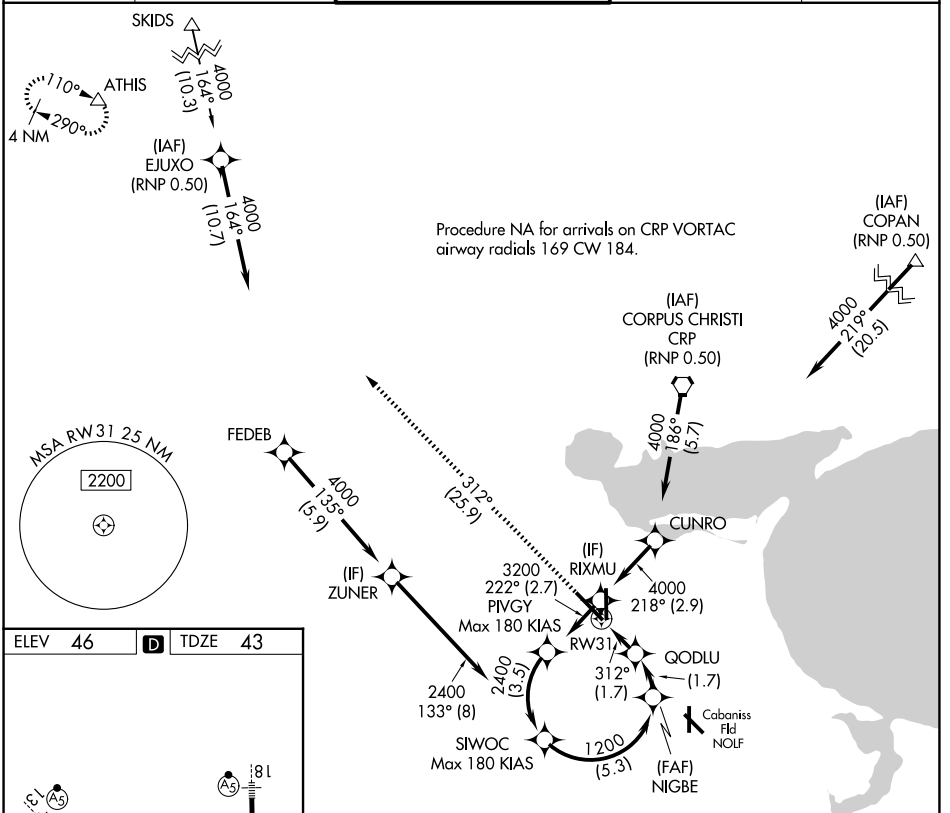
CORPUS CHRISTI INTL (CRP)

▼ For uncompensated Baro-VNAV systems, procedure NA below -1°C (31°F) or above 54°C (130°F). GPS and RF required. For inop MALSR, increase RNP 0.14 all Cats visibility to 7/8 mile.
 *Missed approach requires minimum climb of 335 feet per NM to 500.

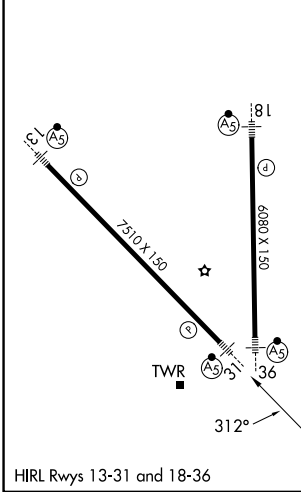


MISSED APPROACH: Climb to 2000 on track 312° to ATHIS and hold.

ATIS 126.8	CORPUS APP CON 120.9 348.725	CORPUS TOWER 119.4 257.8	GND CON 121.9 269.15	CLNC DEL 118.55
----------------------	--	------------------------------------	--------------------------------	---------------------------



ELEV 46	D	TDZE 43
---------	----------	---------



2000	ATHIS	See planview for multiple IF locations.	SIWOC	
↑	△			
fr 312°				
RW31	GODLU	NIGBE	SIWOC	
	646	1200	2400	
		1200		
	1.7 NM	1.7 NM	5.3 NM	
CATEGORY	A	B	C	D
RNP 0.14 DA*		303-1/2	260 (300-1/2)	
RNP 0.30 DA		384-5/8	341 (400-5/8)	

HIRL Rwy 13-31 and 18-36
 CORPUS CHRISTI, TEXAS
 Amdt 1A 28NOV24

27°46'N-97°30'W

CORPUS CHRISTI INTL (CRP) RNAV (RNP) Z RWY 31

AUTHORIZATION REQUIRED

SC-3, 16 APR 2026 to 14 MAY 2026

SC-3, 16 APR 2026 to 14 MAY 2026