

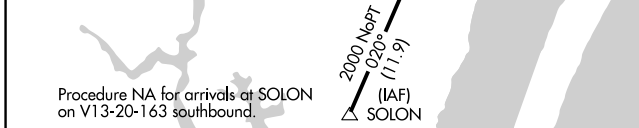
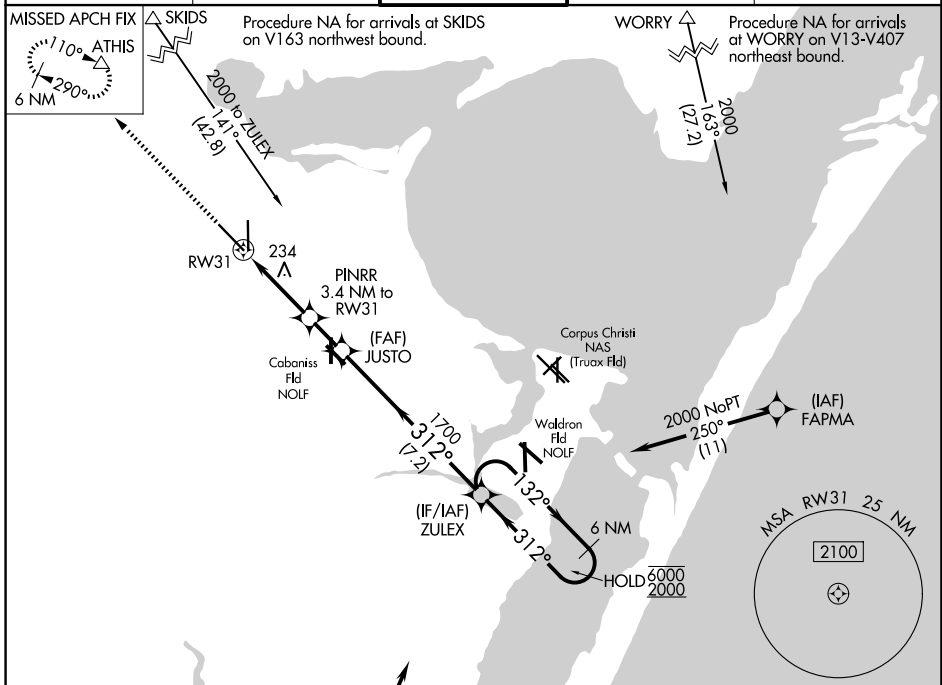
APP CRS	Rwy Ldg	7510
312°	TDZE	43
	Apt Elev	46

RNAV (GPS) X RWY 31

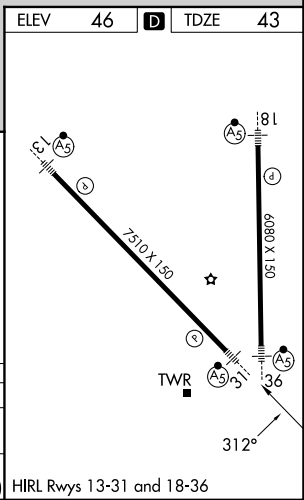
CORPUS CHRISTI INTL (CRP)

RNP APCH - GPS	MALSR	MISSED APPROACH: Climb to 2000 direct ATHIS and hold.
For inop ALS, increase LNAV Cat E visibility to 1 3/8 mile.		

ATIS 126.8	CORPUS APP CON 120.9 348.725	CORPUS TOWER 119.4 257.8	GND CON 121.9 269.15	CLNC DEL 118.55
----------------------	--	------------------------------------	--------------------------------	---------------------------



2000	ATHIS	VGSI and descent angles not coincident (VGSI Angle 3.00/TCH 50).				
		ZULEX	6 NM Holding Pattern			
			132°	6000		
			312°	2000		
			312°			
CATEGORY	A	B	C	D	E	
LNAV MDA	500-1/2	457 (500-1/2)	500-7/8	457 (500-7/8)		
CIRCLING	500-1 454 (500-1)	780-1 734 (800-1)	820-2 1/4 774 (800-2 1/4)	820-2 1/2 774 (800-2 1/2)	820-2 3/4 774 (800-2 3/4)	



SC-3, 16 APR 2026 to 14 MAY 2026

SC-3, 16 APR 2026 to 14 MAY 2026