

WAAS CH <b>60914</b> <b>W31A</b>	APP CRS <b>312°</b>	Rwy Ldg <b>7510</b> TDZE <b>43</b> Apt Elev <b>46</b>
--	------------------------	---

# RNAV (GPS) Y RWY 31

CORPUS CHRISTI INTL (CRP)

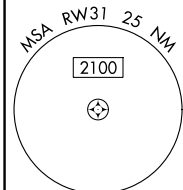
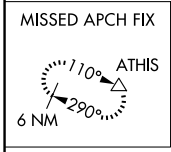
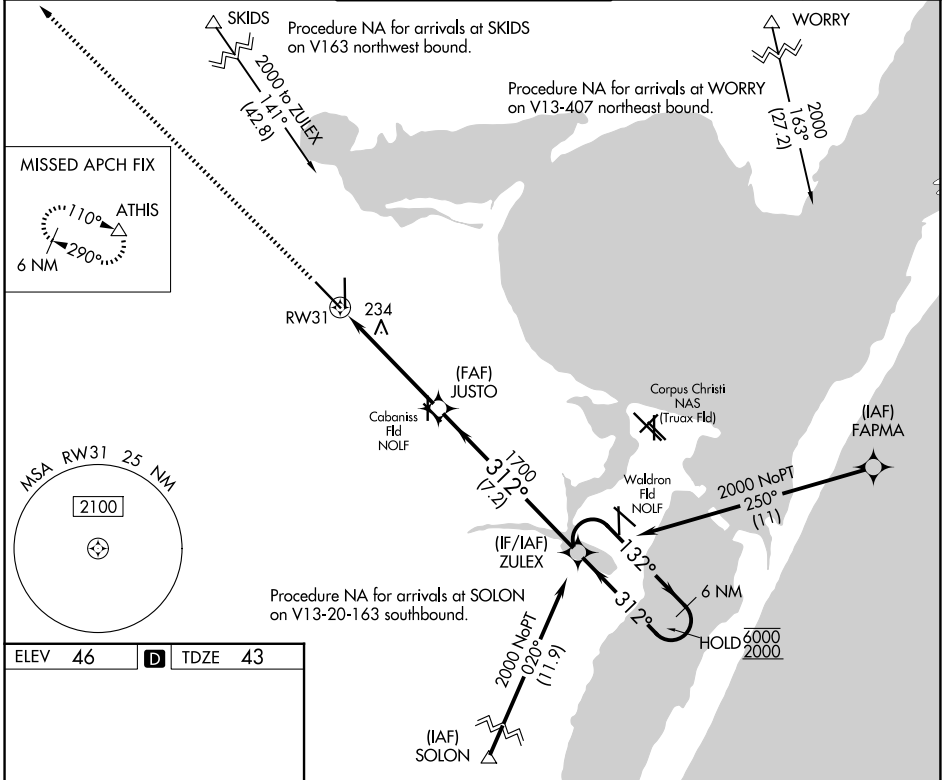
RNP APCH - GPS.

**⚠** For uncompensated Baro-VNAV systems, LNAV/VNAV NA below -1°C or above 54°C.  
**⚠** Procedure NA when Cabaniss Fld traffic patterns active. For inop ALS, increase LPV Cat E visibility to ¾ SM, LNAV/VNAV all Cats visibility to ½ SM, and LNAV Cat E visibility to 1½ SM.

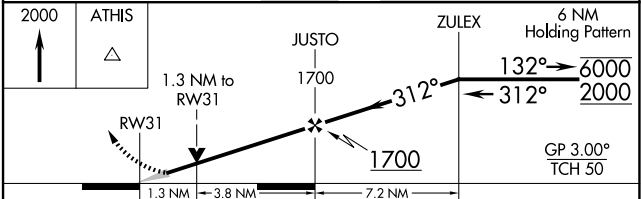
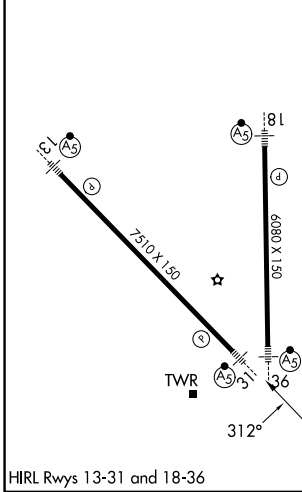


**MISSED APPROACH:**  
Climb to 2000 direct ATHIS and hold.

ATIS <b>126.8</b>	CORPUS APP CON <b>120.9 348.725</b>	CORPUS TOWER <b>119.4 257.8</b>	GND CON <b>121.9 269.15</b>	CLNC DEL <b>118.55</b>
----------------------	--	------------------------------------	--------------------------------	---------------------------



ELEV 46	<b>D</b>	TDZE 43
---------	----------	---------



CATEGORY	A	B	C	D	E
LPV DA	243-½		200 (200-½)		
LNAV/VNAV DA	356-⅝		313 (400-¾)		
LNAV MDA	500-½ 457 (500-½)		500-⅞ 457 (500-⅞)		
CIRCLING	500-1 454 (500-1)	780-1 734 (800-1)	820-2¼ 774 (800-2¼)	820-2½ 774 (800-2½)	820-2¾ 774 (800-2¾)

HIRL Rwy 13-31 and 18-36  
CORPUS CHRISTI, TEXAS  
Amdt 4A 02NOV23

27°46'N-97°30'W

# CORPUS CHRISTI INTL (CRP) RNP (GPS) Y RWY 31

SC-3, 16 APR 2026 to 14 MAY 2026

SC-3, 16 APR 2026 to 14 MAY 2026