

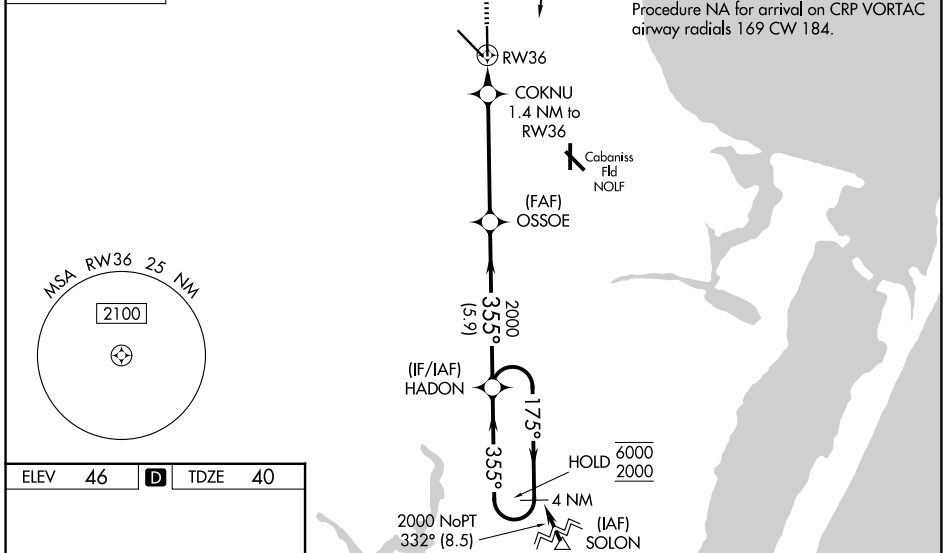
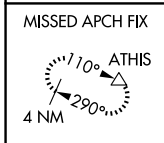
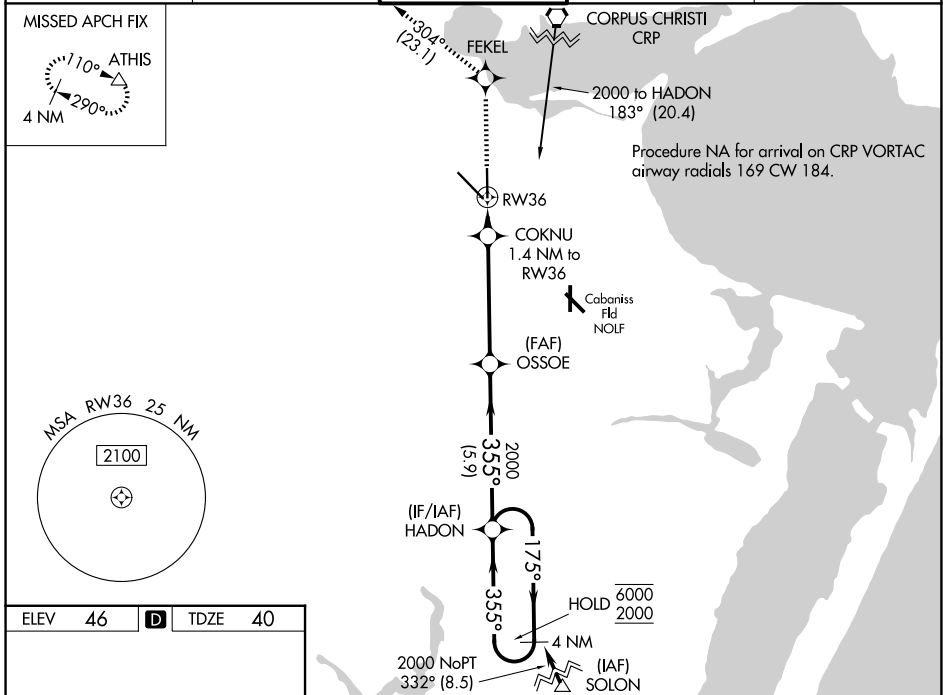
WAAS CH 69617 W36A	APP CRS 355°	Rwy Ldg TDZE Apt Elev	6080 40 46
--	------------------------	-----------------------------	---------------------------------------

RNAV (GPS) Y RWY 36

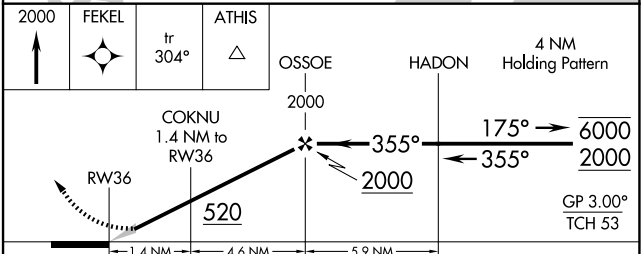
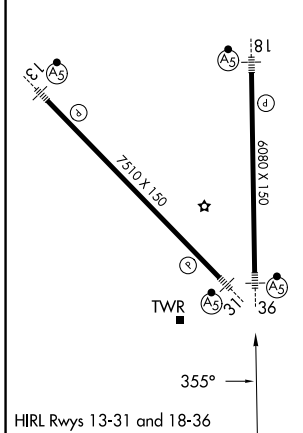
CORPUS CHRISTI INTL (CRP)

RNP APCH - GPS.	<p>⚠ For uncompensated Baro-VNAV systems, LNAV/VNAV NA below -1°C or above 54°C. For inop ALS, increase LPV Cat E visibility to RVR 4000, LNAV/VNAV all Cats visibility to RVR 4500 and LNAV Cat E visibility to RVR 6000. * RVR 1800 authorized with use of FD or AP or HUD to DA.</p>	MALSR 	MISSED APPROACH: Climb to 2000 direct FEKEL and on track 304° to ATHIS and hold.
-----------------	---	-----------	--

ATIS 126.8	CORPUS APP CON 120.9 348.725	CORPUS TOWER 119.4 257.8	GND CON 121.9 269.15	CLNC DEL 118.55
----------------------	--	------------------------------------	--------------------------------	---------------------------



ELEV 46	D	TDZE 40
---------	----------	---------



CATEGORY	A	B	C	D	E
LPV DA*	240/24		200 (200-½)		
LNAV/VNAV DA	356/24		316 (400-½)		
LNAV MDA	440/24		400 (400-½)		440/35 400 (400-¾)
CIRCLING	500-1 454 (500-1)	780-1 734 (600-1)	820-2¼ 774 (800-2¼)	820-2½ 774 (800-2½)	820-2¾ 774 (800-2¾)

SC-3, 16 APR 2026 to 14 MAY 2026

SC-3, 16 APR 2026 to 14 MAY 2026