

(FLG1.OATES) 23334

# FLAGSTAFF ONE DEPARTURE

AL-5034 (FAA)


FLAGSTAFF PULLIAM (F'L'G)  
FLAGSTAFF, ARIZONA

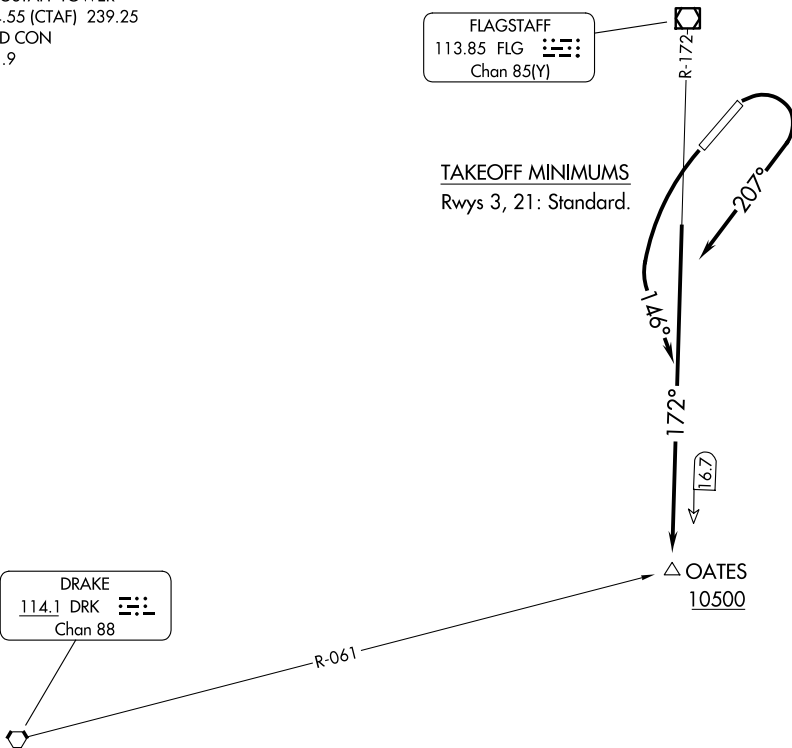
ATIS  
125.8  
PHOENIX DEP CON  
126.375 236.775  
FLAGSTAFF TOWER ★  
134.55 (CTAF) 239.25  
GND CON  
121.9

**TOP ALTITUDE:  
12000**

FLAGSTAFF  
113.85 FLG   
Chan 85(Y)

TAKEOFF MINIMUMS  
Rwys 3, 21: Standard.

DRAKE  
114.1 DRK   
Chan 88



NOTE: Chart not to scale.



## DEPARTURE ROUTE DESCRIPTION

TAKEOFF RUNWAY 3: Climbing right turn heading 207° and FLG R-172 to OATES INT, cross at or above 10500, thence. . . .

TAKEOFF RUNWAY 21: Climbing left turn heading 146° and FLG R-172 to OATES INT, cross at or above 10500, thence. . . .

. . . .as assigned by ATC, continue climb to MEA/MCA for direction of flight.

**FLAGSTAFF ONE DEPARTURE**  
(FLG1.OATES) 07DEC17

FLAGSTAFF, ARIZONA  
FLAGSTAFF PULLIAM (F'L'G)

SW-4, 16 APR 2026 to 14 MAY 2026

SW-4, 16 APR 2026 to 14 MAY 2026